

For Research Use Only

Inhibin beta A-Specific Monoclonal antibody

Catalog Number: 60352-1-Ig



Basic Information

Catalog Number: 60352-1-Ig	GenBank Accession Number: NM_002192	Purification Method: Protein G purification
Size: 150ul , Concentration: 1600 ug/ml by Nanodrop and 1000 ug/ml by Bradford method using BSA as the standard;	GeneID (NCBI): 3624	CloneNo.: 1F8D8
Source: Mouse	UNIPROT ID: P08476	Recommended Dilutions: WB 1:500-1:2000 IHC 1:50-1:500
Isotype: IgG1	Full Name: inhibin, beta A	
	Calculated MW: 47 kDa	
	Observed MW: 47 kDa	

Applications

Tested Applications:
WB, IHC, ELISA

Species Specificity:
human, pig

Note-IHC: suggested antigen retrieval with TE buffer pH 9.0; (*) Alternatively, antigen retrieval may be performed with citrate buffer pH 6.0

Positive Controls:

WB : HepG2 cells, human testis tissue, LO2 cells, pig liver tissue

IHC : human lung cancer tissue, human oesophagus cancer tissue, human stomach cancer tissue

Background Information

Inhibin β A (INHBA) is a ligand in the transforming growth factor β (TGF- β) superfamily. Inhibin β A forms a disulfide-linked homo-dimer known as activin A, which has been implicated in multiple biologic processes, including neoplastic progression. The inhibin β A can also bind the β B and α isoforms to form activin AB and inhibin, respectively.

Storage

Storage:
Store at -20°C. Stable for one year after shipment.
Storage Buffer:
PBS with 0.02% sodium azide and 50% glycerol pH 7.3.
Aliquoting is unnecessary for -20°C storage

*** 20ul sizes contain 0.1% BSA

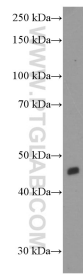
For technical support and original validation data for this product please contact:

T: 1 (888) 4PTGLAB (1-888-478-4522) (toll free in USA), or 1(312) 455-8498 (outside USA)

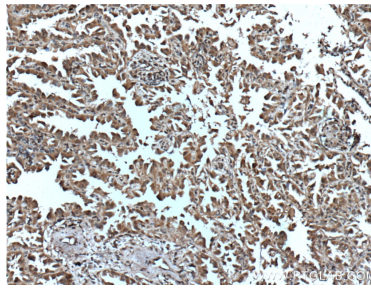
E: proteintech@ptglab.com
W: ptglab.com

This product is exclusively available under Proteintech Group brand and is not available to purchase from any other manufacturer.

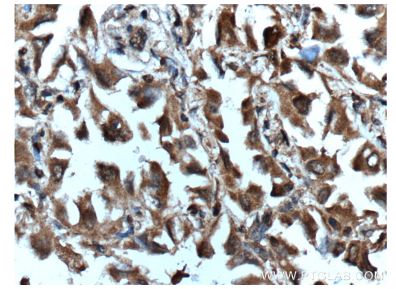
Selected Validation Data



HepG2 cells were subjected to SDS PAGE followed by western blot with 60352-1-Ig (INHBA-Specific Antibody) at dilution of 1:1000 incubated at room temperature for 1.5 hours.



Immunohistochemical analysis of paraffin-embedded human lung cancer tissue slide using 60352-1-Ig (INHBA-Specific Antibody) at dilution of 1:200 (under 10x lens). Heat mediated antigen retrieval with Tris-EDTA buffer (pH 9.0).



Immunohistochemical analysis of paraffin-embedded human lung cancer tissue slide using 60352-1-Ig (INHBA-Specific Antibody) at dilution of 1:150 (under 40x lens). Heat mediated antigen retrieval with Tris-EDTA buffer (pH 9.0).