

For Research Use Only

# MUM1 Monoclonal antibody

Catalog Number: 60353-1-Ig **1 Publications**



## Basic Information

<b>Catalog Number:</b> 60353-1-Ig	<b>GenBank Accession Number:</b> BC008098	<b>Purification Method:</b> Protein A purification
<b>Size:</b> 150ul , Concentration: 1400 µg/ml by Nanodrop and 1000 µg/ml by Bradford method using BSA as the standard;	<b>GeneID (NCBI):</b> 84939	<b>CloneNo.:</b> 3B1D2
<b>Source:</b> Mouse	<b>Full Name:</b> melanoma associated antigen (mutated) 1	<b>Recommended Dilutions:</b> WB 1:1000-1:8000 IF 1:200-1:800
<b>Isotype:</b> IgG2a	<b>Calculated MW:</b> 18 kDa, 79 kDa	
<b>Immunogen Catalog Number:</b> AG3371	<b>Observed MW:</b> 78-80 kDa	

## Applications

<b>Tested Applications:</b> IF, WB, ELISA	<b>Positive Controls:</b> WB : HEK-293 cells, A375 cells, Jurkat cells
<b>Cited Applications:</b> IHC	<b>IF :</b> HeLa cells, A375 cells
<b>Species Specificity:</b> human	
<b>Cited Species:</b> human	

## Background Information

MUM1, also named as EXPAND1, is an architectural component of the chromatin, which in response to DNA damage serves as an accessory factor to promote cell survival. It is a 53BP1-associated DNA damage-responsive factor. MUM1/EXPAND1 is different to another protein IRF4/MUM1.

## Notable Publications

Author	Pubmed ID	Journal	Application
Zhou Qi	35875161	Front Oncol	IHC

## Storage

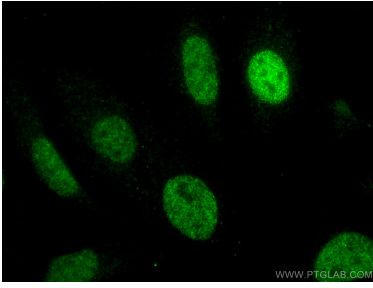
**Storage:**  
Store at -20°C. Stable for one year after shipment.  
**Storage Buffer:**  
PBS with 0.02% sodium azide and 50% glycerol pH 7.3.  
Aliquoting is unnecessary for -20°C storage

\*\*\* 20ul sizes contain 0.1% BSA

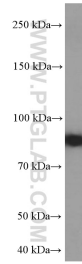
For technical support and original validation data for this product please contact:  
T: 1 (888) 4PTGLAB (1-888-478-4522) (toll free in USA), or 1(312) 455-8498 (outside USA)  
E: proteintech@ptglab.com  
W: ptglab.com

This product is exclusively available under Proteintech Group brand and is not available to purchase from any other manufacturer.

## Selected Validation Data



Immunofluorescent analysis of (4% PFA) fixed HeLa cells using MUM1 antibody (60353-1-Ig, Clone: 3B1D2) at dilution of 1:400 and CoraLite®488-Conjugated AffiniPure Goat Anti-Mouse IgG(H+L).



HEK-293 cells were subjected to SDS PAGE followed by western blot with 60353-1-Ig (MUM1 Antibody) at dilution of 1:4000 incubated at room temperature for 1.5 hours.