

For Research Use Only

MUM1 Monoclonal antibody, PBS Only



Catalog Number: 60353-1-PBS

Basic Information

Catalog Number: 60353-1-PBS	GenBank Accession Number: BC008098	Purification Method: Protein A purification
Size: 100ug , Concentration: 1 mg/ml by Nanodrop;	GeneID (NCBI): 84939	CloneNo.: 3B1D2
Source: Mouse	UNIPROT ID: Q2TAK8	
Isotype: IgG2a	Full Name: melanoma associated antigen (mutated) 1	
Immunogen Catalog Number: AG3371	Calculated MW: 18 kDa, 79 kDa	
	Observed MW: 78-80 kDa	

Applications

Tested Applications:
WB, IF, Indirect ELISA

Species Specificity:
human

Background Information

MUM1, also named as EXPAND1, is an architectural component of the chromatin, which in response to DNA damage serves as an accessory factor to promote cell survival. It is a 53BP1-associated DNA damage-responsive factor. MUM1/EXPAND1 is different to another protein IRF4/MUM1.

Storage

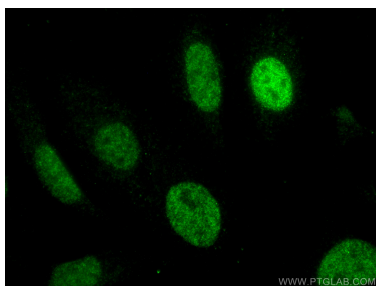
Storage:
Store at -80°C.

Storage Buffer:
PBS Only

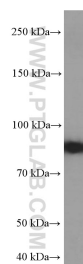
For technical support and original validation data for this product please contact:
T: 1 (888) 4PTGLAB (1-888-478-4522) (toll free in USA), or 1(312) 455-8498 (outside USA)
E: proteintech@ptglab.com
W: ptglab.com

This product is exclusively available under Proteintech Group brand and is not available to purchase from any other manufacturer.

Selected Validation Data



Immunofluorescent analysis of (4% PFA) fixed HeLa cells using MUM1 antibody (60353-1-Ig, Clone: 3B1D2) at dilution of 1:400 and CoraLite®488-Conjugated AffiniPure Goat Anti-Mouse IgG(H+L). This data was developed using the same antibody clone with 60353-1-PBS in a different storage buffer formulation.



HEK-293 cells were subjected to SDS PAGE followed by western blot with 60353-1-Ig (MUM1 Antibody) at dilution of 1:4000 incubated at room temperature for 1.5 hours. This data was developed using the same antibody clone with 60353-1-PBS in a different storage buffer formulation.