

For Research Use Only

ALDH1L2 Monoclonal antibody, PBS Only (Detector)

Catalog Number: 60405-2-PBS



Basic Information

Catalog Number:

60405-2-PBS

Size:

100ug, Concentration: 1 mg/ml by Nanodrop;

Source:

Mouse

Isotype:

IgG2b

Immunogen Catalog Number:

AG17340

GenBank Accession Number:

BC103935

GeneID (NCBI):

160428

UNIPROT ID:

Q3SY69

Full Name:

aldehyde dehydrogenase 1 family, member L2

Calculated MW:

923 aa, 102 kDa

Purification Method:

Protein A Magarose purification

CloneNo.:

1F3H1

Applications

Tested Applications:

Cytometric bead array, Indirect ELISA

Species Specificity:

human

Product Information

60405-2-PBS targets ALDH1L2 as part of a matched antibody pair:

MP50511-1: 60405-1-PBS capture and 60405-2-PBS detection (validated in Cytometric bead array)

MP50511-2: 60405-3-PBS capture and 60405-2-PBS detection (validated in Cytometric bead array)

Unconjugated mouse monoclonal antibody pair in PBS only (BSA and azide free) storage buffer at a concentration of 1 mg/mL, ready for conjugation.

This conjugation ready format makes antibodies ideal for use in many applications including: ELISAs, multiplex assays requiring matched pairs, mass cytometry, and multiplex imaging applications. Antibody use should be optimized by the end user for each application and assay.

Storage

Storage:

Store at -80°C.

Storage Buffer:

PBS Only

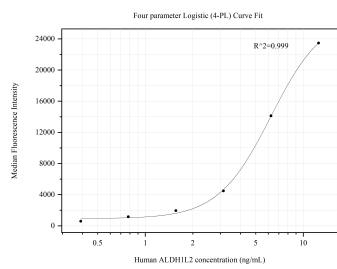
For technical support and original validation data for this product please contact:

T: 1 (888) 4PTGLAB (1-888-478-4522) (toll free in USA), or 1(312) 455-8498 (outside USA)

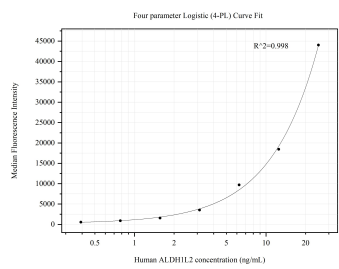
E: proteintech@ptglab.com
W: ptglab.com

This product is exclusively available under Proteintech Group brand and is not available to purchase from any other manufacturer.

Selected Validation Data



Cytometric bead array standard curve of MP50511-1, ALDH1L2 Monoclonal Matched Antibody Pair, PBS Only. Capture antibody: 60405-1-PBS. Detection antibody: 60405-2-PBS. Standard:Ag17340. Range: 0.391-12.5 ng/mL



Cytometric bead array standard curve of MP50511-2, ALDH1L2 Monoclonal Matched Antibody Pair, PBS Only. Capture antibody: 60405-3-PBS. Detection antibody: 60405-2-PBS. Standard:Ag17340. Range: 0.391-25 ng/mL