

For Research Use Only

# EVI1 Monoclonal antibody

Catalog Number: 60413-1-Ig



## Basic Information

Catalog Number:

60413-1-Ig

Size:

150ul , Concentration: 1000 ug/ml by 2122

Nanodrop;

Source:

Mouse

Isotype:

IgG1

Immunogen Catalog Number:

AG34143

GenBank Accession Number:

NM\_001105077

GeneID (NCBI):

2122

UNIPROT ID:

Q03112

Full Name:

ecotropic viral integration site 1

Calculated MW:

138 kDa

Observed MW:

140-150 kDa

Purification Method:

Protein G purification

CloneNo.:

1A12A6

Recommended Dilutions:

WB 1:5000-1:50000

## Applications

Tested Applications:

WB, ELISA

Species Specificity:

human, mouse, rat

Positive Controls:

WB : MKN-45 cells, Calu-3 cells, MDA-MB-231 cells, HeLa cells, Jurkat cells, HSC-T6 cells, NIH/3T3 cells

## Storage

Storage:

Store at -20°C. Stable for one year after shipment.

Storage Buffer:

PBS with 0.02% sodium azide and 50% glycerol pH 7.3.

Aliquoting is unnecessary for -20°C storage

\*\*\* 20ul sizes contain 0.1% BSA

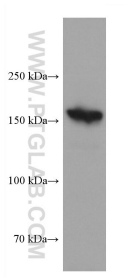
For technical support and original validation data for this product please contact:

T: 1 (888) 4PTGLAB (1-888-478-4522) (toll free in USA), or 1(312) 455-8498 (outside USA)

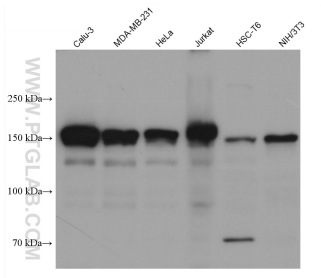
E: [proteintech@ptglab.com](mailto:proteintech@ptglab.com)  
W: [ptglab.com](http://ptglab.com)

This product is exclusively available under Proteintech Group brand and is not available to purchase from any other manufacturer.

Selected Validation Data



MKN-45 cells were subjected to SDS PAGE followed by western blot with 60413-1-Ig (EVI1 antibody) at dilution of 1:10000 incubated at room temperature for 1.5 hours.



Various lysates were subjected to SDS PAGE followed by western blot with 60413-1-Ig (EVI1 antibody) at dilution of 1:10000 incubated at room temperature for 1.5 hours.