

For Research Use Only

LMOD1 Monoclonal antibody

Catalog Number: 60414-1-Ig



Basic Information

Catalog Number: 60414-1-Ig	GenBank Accession Number: BC001755	Purification Method: Protein G purification
Size: 150ul , Concentration: 1000 ug/ml by Nanodrop;	GeneID (NCBI): 25802	CloneNo.: 1D6H2
Source: Mouse	UNIPROT ID: P29536	Recommended Dilutions: WB 1:5000-1:50000 IHC 1:500-1:2000 IF-P 1:1000-1:4000
Isotype: IgG1	Full Name: leiomodien 1 (smooth muscle)	
Immunogen Catalog Number: AG7568	Calculated MW: 67 kDa	
	Observed MW: 75 kDa	

Applications

Tested Applications:

WB, IHC, IF-P, ELISA

Species Specificity:

human, mouse, rat, pig, rabbit

Note-IHC: suggested antigen retrieval with TE buffer pH 9.0; (*) Alternatively, antigen retrieval may be performed with citrate buffer pH 6.0

Positive Controls:

WB : pig colon tissue, ARPE-19 cells, hTERT-RPE1 cells, rabbit colon tissue, rat colon tissue, mouse colon tissue, rabbit testis tissue, rat uterus tissue, mouse uterus tissue

IHC : human colon tissue,

IF-P : mouse heart tissue,

Background Information

LMOD1 was initially identified as a 64-kDa autoantigen in an expression screen with sera from patients with Hashimoto's thyroiditis. Recently immunohistochemistry and immunoblotting of LMOD1 demonstrated its highly restrictive pattern of expression in SMC lineages, like adult aorta, and bladder. LMOD1 is also shown to exhibit an embryonic and adult expression pattern. These data identify LMOD1 as a new SMC-restricted gene associated with the SMC differentiated phenotype.

Storage

Storage:

Store at -20°C. Stable for one year after shipment.

Storage Buffer:

PBS with 0.02% sodium azide and 50% glycerol pH 7.3.

Aliquoting is unnecessary for -20°C storage

*** 20ul sizes contain 0.1% BSA

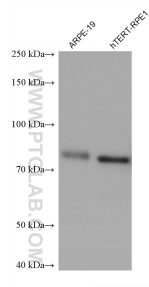
For technical support and original validation data for this product please contact:

T: 1 (888) 4PTGLAB (1-888-478-4522) (toll free in USA), or 1(312) 455-8498 (outside USA)

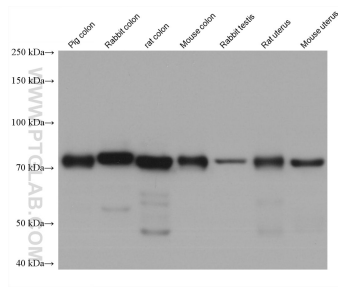
E: proteintech@ptglab.com
W: ptglab.com

This product is exclusively available under Proteintech Group brand and is not available to purchase from any other manufacturer.

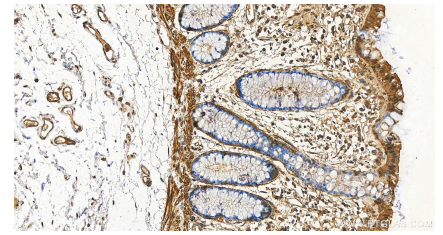
Selected Validation Data



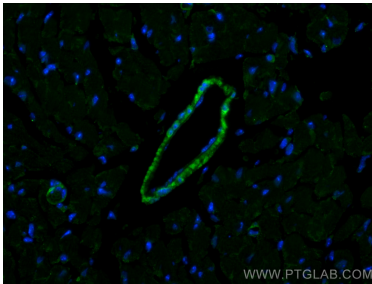
Various lysates were subjected to SDS PAGE followed by western blot with 60414-1-Ig (LMOD1 antibody) at dilution of 1:20000 incubated at room temperature for 1.5 hours.



Various lysates were subjected to SDS PAGE followed by western blot with 60414-1-Ig (LMOD1 antibody) at dilution of 1:20000 incubated at room temperature for 1.5 hours.



Immunohistochemical analysis of paraffin-embedded human colon tissue slide using 60414-1-Ig (LMOD1 antibody) at dilution of 1:1000 (under 20x lens). Heat mediated antigen retrieval with Tris-EDTA buffer (pH 9.0).



Immunofluorescent analysis of (4% PFA) fixed paraffin-embedded mouse heart tissue using LMOD1 antibody (60414-1-Ig, Clone: 1D6H2) at dilution of 1:2000 and CoraLite®488-Conjugated Goat Anti-Mouse IgG(H+L) (SA00013-1). Heat mediated antigen retrieval with Tris-EDTA buffer (pH 9.0).