

For Research Use Only

ATP5L Monoclonal antibody, PBS Only (Capture)

Catalog Number: 60434-1-PBS



Basic Information

Catalog Number: 60434-1-PBS	GenBank Accession Number: BC015128	Purification Method: Protein G Magarose purification
Size: 100ug , Concentration: 1 mg/ml by Nanodrop;	GeneID (NCBI): 10632	CloneNo.: 2D10F9
Source: Mouse	UNIPROT ID: O75964	
Isotype: IgG1	Full Name: ATP synthase, H ⁺ transporting, mitochondrial FO complex, subunit G	
Immunogen Catalog Number: AG9287	Calculated MW: 11 kDa	

Applications

Tested Applications:
IF/ICC, Cytometric bead array, Indirect ELISA

Species Specificity:
human

Product Information

60434-1-PBS targets ATP5L as part of a matched antibody pair:

MP50581-1: 60434-1-PBS capture and 60434-2-PBS detection (validated in Cytometric bead array)

MP50581-2: 60434-1-PBS capture and 60434-3-PBS detection (validated in Cytometric bead array)

Unconjugated mouse monoclonal antibody pair in PBS only (BSA and azide free) storage buffer at a concentration of 1 mg/mL, ready for conjugation.

This conjugation ready format makes antibodies ideal for use in many applications including: ELISAs, multiplex assays requiring matched pairs, mass cytometry, and multiplex imaging applications. Antibody use should be optimized by the end user for each application and assay.

Background Information

Mitochondrial membrane ATP synthase (F1-Fo ATP synthase or Complex V) produces ATP from ADP in the presence of a proton gradient across the membrane which is generated by electron transport complexes of the respiratory chain. It is composed of the soluble catalytic core, F1, and the membrane-spanning component and Fo, which comprises the proton channel. The Fo seems to have nine subunits (a, b, c, d, e, f, g, F6 and 8). ATP5L gene encodes ATP synthase subunit g of the Fo complex.

Storage

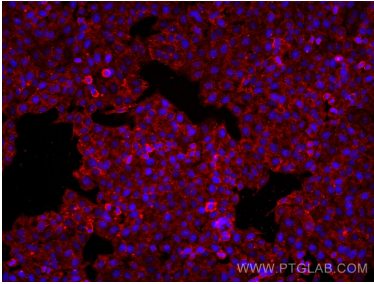
Storage:
Store at -80°C.

Storage Buffer:
PBS Only

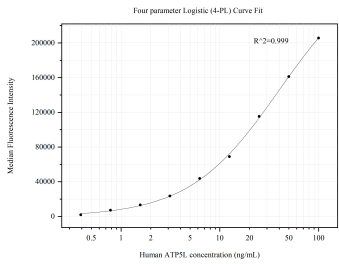
For technical support and original validation data for this product please contact:
T: 1 (888) 4PTGLAB (1-888-478-4522) (toll free in USA), or 1(312) 455-8498 (outside USA)
E: proteintech@ptglab.com
W: ptglab.com

This product is exclusively available under Proteintech Group brand and is not available to purchase from any other manufacturer.

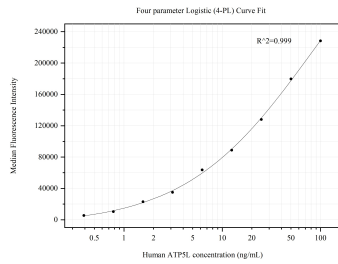
Selected Validation Data



Immunofluorescent analysis of (4% PFA) fixed HepG2 cells using ATP5L antibody (60434-1-Ig, Clone: 2D10F9) at dilution of 1:1000 and Multi-rAb CoraLite® Plus 594-Goat Anti-Mouse Recombinant Secondary Antibody (H+L) (Cat.NO. RGAM004). This data was developed using the same antibody clone with 60434-1-PBS in a different storage buffer formulation.



Cytometric bead array standard curve of MP50581-1, ATP5L Monoclonal Matched Antibody Pair, PBS Only. Capture antibody: 60434-1-PBS. Detection antibody: 60434-2-PBS. Standard:Ag9287. Range: 0.391-100 ng/mL



Cytometric bead array standard curve of MP50581-2, ATP5L Monoclonal Matched Antibody Pair, PBS Only. Capture antibody: 60434-1-PBS. Detection antibody: 60434-3-PBS. Standard:Ag9287. Range: 0.391-100 ng/mL