

For Research Use Only

CCL24/Eotaxin 2 Monoclonal antibody, PBS Only (Capture/Detector)

Catalog Number: 60443-1-PBS



Basic Information

Catalog Number:

60443-1-PBS

Size:

100ug, Concentration: 1 mg/ml by
Nanodrop;

Source:

Mouse

Isotype:

IgG1

GenBank Accession Number:

NM_002991

GeneID (NCBI):

6369

UNIPROT ID:

O00175

Full Name:

chemokine (C-C motif) ligand 24

Calculated MW:

13kd

Purification Method:

Protein G Magarose purification

CloneNo.:

2A4E10

Applications

Tested Applications:

Cytometric bead array, Sandwich ELISA, Indirect ELISA,
Sample test

Species Specificity:

human

Product Information

60443-1-PBS targets CCL24/Eotaxin 2 as part of a matched antibody pair:

MP50599-1: 60443-1-PBS capture and 60443-2-PBS detection (validated in Cytometric bead array)

MP50599-2: 60443-3-PBS capture and 60443-1-PBS detection (validated in Cytometric bead array, Sandwich ELISA)

Unconjugated mouse monoclonal antibody pair in PBS only (BSA and azide free) storage buffer at a concentration of 1 mg/mL, ready for conjugation.

This conjugation ready format makes antibodies ideal for use in many applications including: ELISAs, multiplex assays requiring matched pairs, mass cytometry, and multiplex imaging applications. Antibody use should be optimized by the end user for each application and assay.

Storage

Storage:

Store at -80°C.

Storage Buffer:

PBS Only

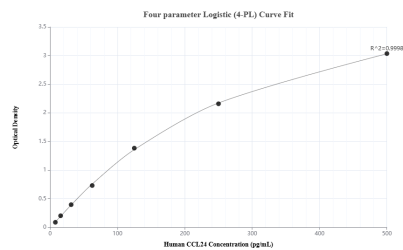
For technical support and original validation data for this product please contact:

T: 1 (888) 4PTGLAB (1-888-478-4522) (toll free
in USA), or 1(312) 455-8498 (outside USA)

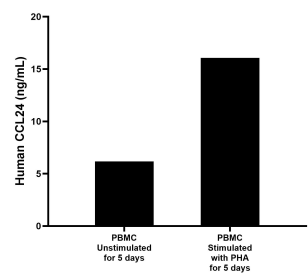
E: proteintech@ptglab.com
W: ptglab.com

This product is exclusively available under Proteintech Group brand and is not available to purchase from any other manufacturer.

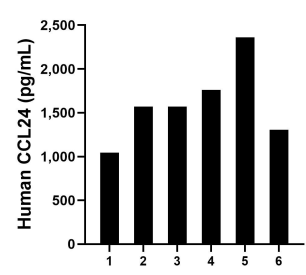
Selected Validation Data



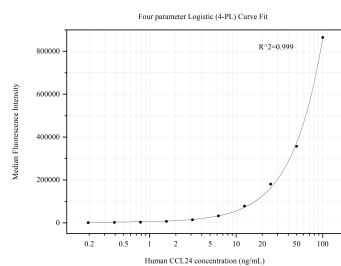
Sandwich ELISA standard curve of MP50599-2, Human CCL24 Monoclonal Matched Antibody Pair - PBS only. 60443-3-PBS was coated to a plate as the capture antibody and incubated with serial dilutions of standard Eg0395. 60443-1-PBS was HRP conjugated as the detection antibody. Range: 7.81-500 pg/mL



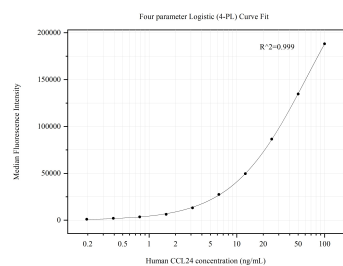
Human peripheral blood mononuclear cells (PBMC) were cultured unstimulated or stimulated with 10 µg/mL PHA for 5 days. The mean CCL24 concentration was determined to be 6.17 ng/mL in unstimulated PBMC supernatant, 16.05 ng/mL in PHA stimulated PBMC supernatant.



Serum of six individual healthy human donors was measured. The human CCL24 concentration of detected samples was determined to be 1,601.6 pg/mL with a range of 1,044.2 - 2,359.1 ng/mL



Cytometric bead array standard curve of MP50599-1, CCL24 Monoclonal Matched Antibody Pair, PBS Only. Capture antibody: 60443-1-PBS. Detection antibody: 60443-2-PBS. Standard:Eg0395. Range: 0.195-100 ng/mL



Cytometric bead array standard curve of MP50599-2, CCL24 Monoclonal Matched Antibody Pair, PBS Only. Capture antibody: 60443-3-PBS. Detection antibody: 60443-1-PBS. Standard:Eg0395. Range: 0.195-100 ng/mL