

For Research Use Only

SLC25A3 Monoclonal antibody, PBS Only (Detector)

Catalog Number: 60451-4-PBS



Basic Information

Catalog Number:

60451-4-PBS

Size:

100ug, Concentration: 1 mg/ml by Nanodrop;

Source:

Mouse

Isotype:

IgG1

Immunogen Catalog Number:

AG4377

GenBank Accession Number:

BC003504

GeneID (NCBI):

5250

UNIPROT ID:

Q00325

Full Name:

solute carrier family 25 (mitochondrial carrier; phosphate carrier), member 3

Calculated MW:

40 kDa

Purification Method:

Protein G Magarose purification

CloneNo.:

2B6F6

Applications

Tested Applications:

Cytometric bead array, Indirect ELISA

Species Specificity:

human

Product Information

60451-4-PBS targets SLC25A3 as part of a matched antibody pair:

MP50610-2: 60451-3-PBS capture and 60451-4-PBS detection (validated in Cytometric bead array)

MP50610-3: 60451-5-PBS capture and 60451-4-PBS detection (validated in Cytometric bead array)

Unconjugated mouse monoclonal antibody pair in PBS only (BSA and azide free) storage buffer at a concentration of 1 mg/mL, ready for conjugation.

This conjugation ready format makes antibodies ideal for use in many applications including: ELISAs, multiplex assays requiring matched pairs, mass cytometry, and multiplex imaging applications. Antibody use should be optimized by the end user for each application and assay.

Storage

Storage:

Store at -80°C.

Storage Buffer:

PBS Only

For technical support and original validation data for this product please contact:

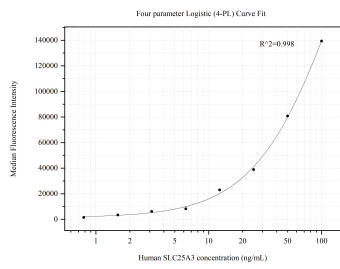
T: 1 (888) 4PTGLAB (1-888-478-4522) (toll free in USA), or 1(312) 455-8498 (outside USA)

E: proteintech@ptglab.com

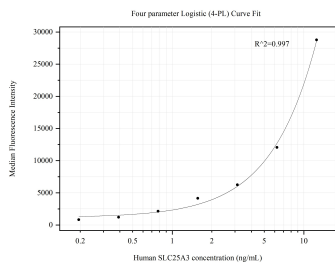
W: ptglab.com

This product is exclusively available under Proteintech Group brand and is not available to purchase from any other manufacturer.

Selected Validation Data



Cytometric bead array standard curve of MP50610-2, SLC25A3 Monoclonal Matched Antibody Pair, PBS Only. Capture antibody: 60451-3-PBS. Detection antibody: 60451-4-PBS. Standard:Ag4377. Range: 0.781-100 ng/mL



Cytometric bead array standard curve of MP50610-3, SLC25A3 Monoclonal Matched Antibody Pair, PBS Only. Capture antibody: 60451-5-PBS. Detection antibody: 60451-4-PBS. Standard:Ag4377. Range: 0.195-12.5 ng/mL