

For Research Use Only

# CEP120 Monoclonal antibody

Catalog Number: 60468-1-Ig



## Basic Information

<b>Catalog Number:</b> 60468-1-Ig	<b>GenBank Accession Number:</b> BC040527	<b>Purification Method:</b> Protein A purification
<b>Size:</b> 150ul , Concentration: 1000 ug/ml by Nanodrop;	<b>GeneID (NCBI):</b> 153241	<b>CloneNo.:</b> 1G12B4
<b>Source:</b> Mouse	<b>UNIPROT ID:</b> Q8N960	<b>Recommended Dilutions:</b> WB 1:1000-1:4000
<b>Isotype:</b> IgG2a	<b>Full Name:</b> centrosomal protein 120kDa	
<b>Immunogen Catalog Number:</b> AG33947	<b>Calculated MW:</b> 986 aa, 113 kDa	
	<b>Observed MW:</b> 120 kDa	

## Applications

<b>Tested Applications:</b> WB, ELISA	<b>Positive Controls:</b>
<b>Species Specificity:</b> human	<b>WB :</b> A549 cells, HepG2 cells, Jurkat cells, MOLT-4 cells, K-562 cells, IMR-32 cells

## Background Information

CEP120 encodes a protein that functions in the microtubule-dependent coupling of the nucleus and the centrosome. It is involved in regulating centrosome-mediated interkinetic nuclear migration of neural progenitors (PMID: 27185865, 23857771). CEP120, SPICE1, and CPAP are required for centriole elongation and for the recruitment of distal microtubule-capping proteins and CEP135 to procentrioles (PMID: 23810536).

## Storage

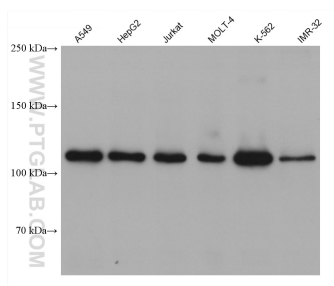
**Storage:**  
Store at -20°C. Stable for one year after shipment.  
**Storage Buffer:**  
PBS with 0.02% sodium azide and 50% glycerol pH 7.3.  
**Aliquoting is unnecessary for -20°C storage**

\*\*\* 20ul sizes contain 0.1% BSA

For technical support and original validation data for this product please contact:  
T: 1 (888) 4PTGLAB (1-888-478-4522) (toll free in USA), or 1(312) 455-8498 (outside USA)  
E: [proteintech@ptglab.com](mailto:proteintech@ptglab.com)  
W: [ptglab.com](http://ptglab.com)

This product is exclusively available under Proteintech Group brand and is not available to purchase from any other manufacturer.

## Selected Validation Data



Various lysates were subjected to SDS PAGE followed by western blot with 60468-1-Ig (CEP120 antibody) at dilution of 1:2000 incubated at room temperature for 1.5 hours.