

For Research Use Only

NARS2 Monoclonal antibody

Catalog Number:60487-7-Ig



Basic Information

Catalog Number: 60487-7-Ig	GenBank Accession Number: BC007800	Purification Method: Protein G purification
Size: 150ul , Concentration: 1000 ug/ml by Nanodrop;	GeneID (NCBI): 79731	CloneNo.: 1G2H12
Source: Mouse	UNIPROT ID: Q96159	Recommended Dilutions: WB: 1:2000-1:10000
Isotype: IgG1	Full Name: asparaginyl-tRNA synthetase 2, mitochondrial (putative)	
Immunogen Catalog Number: AG9326	Calculated MW: 477 aa, 54 kDa	
	Observed MW: 50-54 kDa	

Applications

Tested Applications: WB, ELISA	Positive Controls: WB : LNCaP cells, Caco-2 cells, HeLa cells, HepG2 cells, K-562 cells, HSC-T6 cells, NIH/3T3 cells
Species Specificity: human, mouse, rat	

Background Information

NARS2 (asparaginyl-tRNA synthetase 2, mitochondrial) is a nuclear-encoded enzyme that functions within the mitochondria, the energy-producing organelles of the cell. It belongs to the class II family of aminoacyl-tRNA synthetases (aaRSs), a group of essential enzymes responsible for protein synthesis. Its proper function is indispensable for mitochondrial protein synthesis and energy production, and its deficiency underlies a spectrum of severe human metabolic and neurological diseases.

Storage

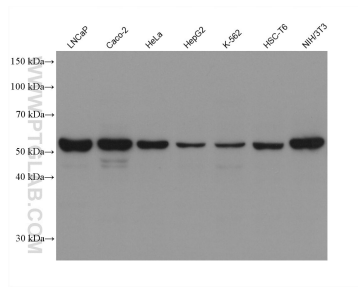
Storage:
Store at -20°C. Stable for one year after shipment.
Storage Buffer:
PBS with 0.02% sodium azide and 50% glycerol, pH7.3
Aliquoting is unnecessary for -20°C storage

*** 20ul sizes contain 0.1% BSA

For technical support and original validation data for this product please contact:
T: 1 (888) 4PTGLAB (1-888-478-4522) (toll free in USA), or 1(312) 455-8498 (outside USA) E: proteintech@ptglab.com
W: ptglab.com

This product is exclusively available under Proteintech Group brand and is not available to purchase from any other manufacturer.

Selected Validation Data



Various lysates were subjected to SDS PAGE followed by western blot with 60487-7-Ig (NARS2 antibody) at dilution of 1:5000 incubated at room temperature for 1.5 hours.