

For Research Use Only

# DCP1A Monoclonal antibody

Catalog Number: 60494-1-Ig



## Basic Information

<b>Catalog Number:</b> 60494-1-Ig	<b>GenBank Accession Number:</b> BC007439	<b>Purification Method:</b> Protein A purification
<b>Size:</b> 150ul , Concentration: 1000 ug/ml by Nanodrop;	<b>GeneID (NCBI):</b> 55802	<b>CloneNo.:</b> 2D11E2
<b>Source:</b> Mouse	<b>UNIPROT ID:</b> Q9NPI6	<b>Recommended Dilutions:</b> WB 1:5000-1:50000
<b>Isotype:</b> IgG2a	<b>Full Name:</b> DCP1 decapping enzyme homolog A (S. cerevisiae)	
<b>Immunogen Catalog Number:</b> AG18706	<b>Calculated MW:</b> 582 aa, 63 kDa	
	<b>Observed MW:</b> 70 kDa	

## Applications

<b>Tested Applications:</b> WB, ELISA	<b>Positive Controls:</b>
<b>Species Specificity:</b> human, mouse, rat, pig	<b>WB :</b> LoVo cells, rat brain tissue, HCT 116 cells, HEK-293 cells, Jurkat cells, MOLT-4 cells, Raji cells, mouse brain tissue, pig brain tissue

## Background Information

DCP1 decapping enzyme homolog A (S. cerevisiae), known as mRNA-decapping enzyme 1A (DCP1A), is necessary for the degradation of mRNAs, both in normal mRNA turnover and in nonsense-mediated mRNA decay. Removes the 7-methyl guanine cap structure from mRNA molecules, yielding a 5'-phosphorylated mRNA fragment and 7m-GDP. Contributes to the transactivation of target genes after stimulation by TGFβ1. This antibody specifically reacts with the 70kd DCP1A protein.

## Storage

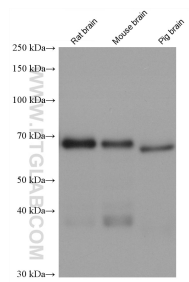
**Storage:**  
Store at -20°C. Stable for one year after shipment.  
**Storage Buffer:**  
PBS with 0.02% sodium azide and 50% glycerol pH 7.3.  
**Aliquoting is unnecessary for -20°C storage**

\*\*\* 20ul sizes contain 0.1% BSA

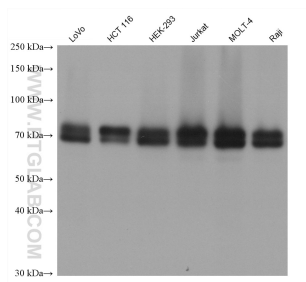
For technical support and original validation data for this product please contact:  
T: 1 (888) 4PTGLAB (1-888-478-4522) (toll free in USA), or 1(312) 455-8498 (outside USA)  
E: [proteintech@ptglab.com](mailto:proteintech@ptglab.com)  
W: [ptglab.com](http://ptglab.com)

This product is exclusively available under Proteintech Group brand and is not available to purchase from any other manufacturer.

## Selected Validation Data



Various lysates were subjected to SDS PAGE followed by western blot with 60494-1-Ig (DCP1A antibody) at dilution of 1:10000 incubated at room temperature for 1.5 hours.



Various lysates were subjected to SDS PAGE followed by western blot with 60494-1-Ig (DCP1A antibody) at dilution of 1:10000 incubated at room temperature for 1.5 hours.