

For Research Use Only

SIGLEC10 Monoclonal antibody

Catalog Number: 60547-1-Ig



Basic Information

Catalog Number:

60547-1-Ig

Size:

150ul , Concentration: 1000 ug/ml by

Nanodrop;

Source:

Mouse

Isotype:

IgG2a

Immunogen Catalog Number:

AG20755

GenBank Accession Number:

BC101725

GeneID (NCBI):

89790

UNIPROT ID:

Q96LC7

Full Name:

sialic acid binding Ig-like lectin 10

Calculated MW:

697 aa, 77 kDa

Observed MW:

70-100 kDa

Purification Method:

Protein A purification

CloneNo.:

2E9D7

Recommended Dilutions:

WB 1:2000-1:10000

Applications

Tested Applications:

WB, ELISA

Species Specificity:

human

Positive Controls:

WB : Karpas-422 cells, TF-1 cells

Storage

Storage:

Store at -20°C. Stable for one year after shipment.

Storage Buffer:

PBS with 0.02% sodium azide and 50% glycerol pH 7.3.

Aliquoting is unnecessary for -20°C storage

*** 20ul sizes contain 0.1% BSA

For technical support and original validation data for this product please contact:

T: 1 (888) 4PTGLAB (1-888-478-4522) (toll free
in USA), or 1(312) 455-8498 (outside USA)

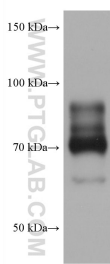
E: proteintech@ptglab.com
W: ptglab.com

This product is exclusively available under Proteintech Group brand and is not available to purchase from any other manufacturer.

Selected Validation Data



TF-1 cells were subjected to SDS PAGE followed by western blot with 60547-1-Ig (SIGLEC10 antibody) at dilution of 1:5000 incubated at room temperature for 1.5 hours.



Karpas-422 cells were subjected to SDS PAGE followed by western blot with 60547-1-Ig (SIGLEC10 antibody) at dilution of 1:5000 incubated at room temperature for 1.5 hours.