

For Research Use Only

# SIGLEC10 Monoclonal antibody, PBS Only

Catalog Number: 60547-1-PBS



## Basic Information

Catalog Number:

60547-1-PBS

Size:

100ug, Concentration: 1 mg/ml by Nanodrop;

Source:

Mouse

Isotype:

IgG2a

Immunogen Catalog Number:

AG20755

GenBank Accession Number:

BC101725

GeneID (NCBI):

89790

UNIPROT ID:

Q96LC7

Full Name:

sialic acid binding Ig-like lectin 10

Calculated MW:

697 aa, 77 kDa

Observed MW:

70-100 kDa

Purification Method:

Protein A purification

CloneNo.:

2E9D7

## Applications

Tested Applications:

WB, Indirect ELISA

Species Specificity:

human

## Storage

Storage:

Store at -80°C.

Storage Buffer:

PBS Only

For technical support and original validation data for this product please contact:

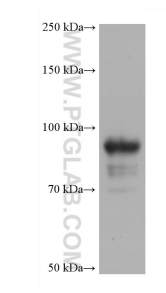
T: 1 (888) 4PTGLAB (1-888-478-4522) (toll free in USA), or 1(312) 455-8498 (outside USA)

E: [proteintech@ptglab.com](mailto:proteintech@ptglab.com)

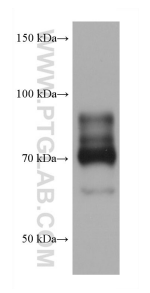
W: [ptglab.com](http://ptglab.com)

This product is exclusively available under Proteintech Group brand and is not available to purchase from any other manufacturer.

## Selected Validation Data



TF-1 cells were subjected to SDS PAGE followed by western blot with 60547-1-Ig (SIGLEC10 antibody) at dilution of 1:5000 incubated at room temperature for 1.5 hours. This data was developed using the same antibody clone with 60547-1-PBS in a different storage buffer formulation.



Karpas-422 cells were subjected to SDS PAGE followed by western blot with 60547-1-Ig (SIGLEC10 antibody) at dilution of 1:5000 incubated at room temperature for 1.5 hours. This data was developed using the same antibody clone with 60547-1-PBS in a different storage buffer formulation.