

For Research Use Only

POT1 Monoclonal antibody

Catalog Number:60556-7-Ig



Basic Information

Catalog Number: 60556-7-Ig	GenBank Accession Number: BC002923	Purification Method: Protein A purification
Size: 150ul , Concentration: 1000 ug/ml by Nanodrop;	GeneID (NCBI): 25913	CloneNo.: 1G1C2
Source: Mouse	UNIPROT ID: Q9NUX5	Recommended Dilutions: WB: 1:5000-1:50000
Isotype: IgG2a	Full Name: POT1 protection of telomeres 1 homolog (S. pombe)	
Immunogen Catalog Number: AG36974	Calculated MW: 71 kDa	
	Observed MW: 71 kDa	

Applications

Tested Applications:
WB, ELISA

Species Specificity:
human

Positive Controls:
WB : HeLa cells, HEK-293 cells, Jurkat cells, K-562 cells, MOLT-4 cells, Daudi cells, Karpas-422 cells, Ramos cells

Background Information

Protection of telomeres 1(POT1) is a conserved protein that binds the G-rich strand of its own telomeric repeat sequence, with a role in protecting chromosome ends. It's housekeeping gene that is required to ensure the integrity of chromosome ends in all cells. It's a component of the telomerase ribonucleoprotein(RNP) complex that is essential for the replication of chromosome termini. It consists the TRF1 complex that is involved in the regulation of telomere length by cis-inhibition of telomerase. We have discovered that POT1 exists in at least three consistently occurring forms; 90, 70 and 45kDa. The unexpected molecular weights of POT1 seem to be associated with SUMO1 and ubiquitin conjugation; the latter occurring at a double lysine residue at 289-KK-290 (.PMID: 24054699)

Storage

Storage:
Store at -20°C. Stable for one year after shipment.

Storage Buffer:
PBS with 0.02% sodium azide and 50% glycerol, pH7.3

Aliquoting is unnecessary for -20°C storage

*** 20ul sizes contain 0.1% BSA

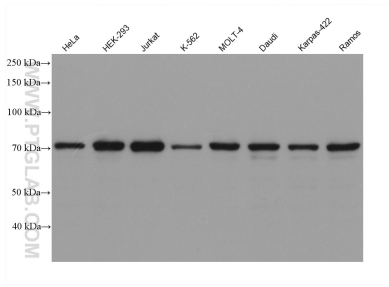
For technical support and original validation data for this product please contact:

T: 1 (888) 4PTGLAB (1-888-478-4522) (toll free in USA), or 1(312) 455-8498 (outside USA)

E: proteintech@ptglab.com
W: ptglab.com

This product is exclusively available under Proteintech Group brand and is not available to purchase from any other manufacturer.

Selected Validation Data



Various lysates were subjected to SDS PAGE followed by western blot with 60556-7-Ig (POT1 antibody) at dilution of 1:10000 incubated at room temperature for 1.5 hours.