

For Research Use Only

# POT1 Monoclonal antibody, PBS Only

Catalog Number:60556-7-PBS



## Basic Information

|                                                             |                                                                        |                                                       |
|-------------------------------------------------------------|------------------------------------------------------------------------|-------------------------------------------------------|
| <b>Catalog Number:</b><br>60556-7-PBS                       | <b>GenBank Accession Number:</b><br>BC002923                           | <b>Purification Method:</b><br>Protein A purification |
| <b>Size:</b><br>100ug , Concentration: 1 mg/ml by Nanodrop; | <b>GeneID (NCBI):</b><br>25913                                         | <b>CloneNo.:</b><br>1G1C2                             |
| <b>Source:</b><br>Mouse                                     | <b>UNIPROT ID:</b><br>Q9NUX5                                           |                                                       |
| <b>Isotype:</b><br>IgG2a                                    | <b>Full Name:</b><br>POT1 protection of telomeres 1 homolog (S. pombe) |                                                       |
| <b>Immunogen Catalog Number:</b><br>AG36974                 | <b>Calculated MW:</b><br>71 kDa                                        |                                                       |
|                                                             | <b>Observed MW:</b><br>71 kDa                                          |                                                       |

## Applications

**Tested Applications:**  
WB, Indirect ELISA

**Species Specificity:**  
human

## Background Information

Protection of telomeres 1(POT1) is a conserved protein that binds the G-rich stand of its own telomeric repeat sequence, with a role in protecting chromosome ends. It's housekeeping gene that is required to ensure the integrity of chromosome ends in all cells. It's a component of the telomerase ribonucleoprotein(RNP) complex that is essential for the replication of chromosome termini. It consists the TRF1 complex that is involved in the regulation of telomere length by cis-inhibition of telomerase. We have discovered that POT1 exists in at least three consistently occurring forms; 90, 70 and 45kDa. The unexpected molecular weights of POT1 seem to be associated with SUMO1 and ubiquitin conjugation; the latter occurring at a double lysine residue at 289-KK-290 (.PMID: 24054699)

## Storage

**Storage:**  
Store at -80°C.

**Storage Buffer:**  
PBS only, pH7.3

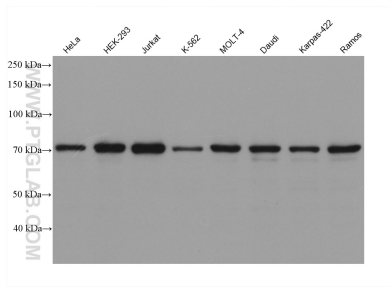
For technical support and original validation data for this product please contact:

T: 1 (888) 4PTGLAB (1-888-478-4522) (toll free in USA), or 1(312) 455-8498 (outside USA)

E: [proteintech@ptglab.com](mailto:proteintech@ptglab.com)  
W: [ptglab.com](http://ptglab.com)

**This product is exclusively available under Proteintech Group brand and is not available to purchase from any other manufacturer.**

## Selected Validation Data



Various lysates were subjected to SDS PAGE followed by western blot with 60556-7-Ig (POT1 antibody) at dilution of 1:10000 incubated at room temperature for 1.5 hours. This data was developed using the same antibody clone with 60556-7-PBS in a different storage buffer formulation.