

For Research Use Only

# PTRF Monoclonal antibody

Catalog Number: 60562-4-Ig



## Basic Information

<b>Catalog Number:</b> 60562-4-Ig	<b>GenBank Accession Number:</b> BC008849	<b>Purification Method:</b> Protein A purification
<b>Size:</b> 150ul , Concentration: 1000 ug/ml by Nanodrop;	<b>GeneID (NCBI):</b> 284119	<b>CloneNo.:</b> 3B9F11
<b>Source:</b> Mouse	<b>UNIPROT ID:</b> Q6NZI2	<b>Recommended Dilutions:</b> WB: 1:5000-1:50000
<b>Isotype:</b> IgG2b	<b>Full Name:</b> polymerase I and transcript release factor	
<b>Immunogen Catalog Number:</b> AG13495	<b>Calculated MW:</b> 43 kDa	
	<b>Observed MW:</b> 50-55 kDa	

## Applications

### Tested Applications:

WB, ELISA

### Species Specificity:

human, mouse, rat, pig, rabbit

### Positive Controls:

WB : HaCaT cells, A431 cells, A549 cells, HeLa cells, K-562 cells, rabbit colon tissue, rat colon tissue, mouse colon tissue, pig adipose tissue

## Background Information

Polymerase I and transcript release factor (PTRF) is an essential factor in the biogenesis of caveolae, which involve in numerous process, such as signal transduction and membrane and lipid trafficking. PTRF can terminate transcription of RNA Pol I, which involves pausing of transcription by TTF1, and dissociation of the transcription complex, release the complex from the template. The calculated molecular weight of PTRF is 43 kDa, but modified PTRF is about 50-55 kDa. (PMID: 11139612)

## Storage

### Storage:

Store at -20°C. Stable for one year after shipment.

### Storage Buffer:

PBS with 0.02% sodium azide and 50% glycerol, pH7.3

Aliquoting is unnecessary for -20°C storage

\*\*\* 20ul sizes contain 0.1% BSA

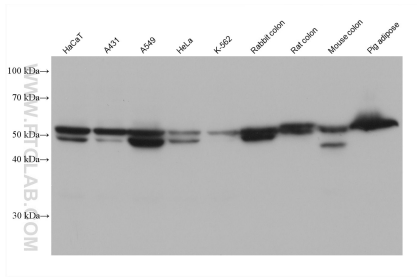
For technical support and original validation data for this product please contact:

T: 1 (888) 4PTGLAB (1-888-478-4522) (toll free in USA), or 1(312) 455-8498 (outside USA)

E: [proteintech@ptglab.com](mailto:proteintech@ptglab.com)  
W: [ptglab.com](http://ptglab.com)

This product is exclusively available under Proteintech Group brand and is not available to purchase from any other manufacturer.

## Selected Validation Data



Various lysates were subjected to SDS PAGE followed by western blot with 60562-4-Ig (PTRF antibody) at dilution of 1:20000 incubated at room temperature for 1.5 hours.