

For Research Use Only

CCR10 Monoclonal antibody, PBS Only (Capture)

Catalog Number: 60574-1-PBS



Basic Information

Catalog Number: 60574-1-PBS	GenBank Accession Number: BC099840	Purification Method: Protein G purification
Size: 100ug , Concentration: 1 mg/ml by Nanodrop;	GeneID (NCBI): 2826	CloneNo.: 4E3E11
Source: Mouse	UNIPROT ID: P46092	
Isotype: IgG1	Full Name: chemokine (C-C motif) receptor 10	
Immunogen Catalog Number: AG17212	Calculated MW: 362 aa, 38 kDa	

Applications

Tested Applications:
Cytometric bead array, Sandwich ELISA, Indirect ELISA, Sample test

Species Specificity:
human

Product Information

60574-1-PBS targets CCR10 as part of a matched antibody pair:

MP50812-1: 60574-1-PBS capture and 60574-2-PBS detection (validated in Cytometric bead array, Sandwich ELISA)

Unconjugated mouse monoclonal antibody pair in PBS only (BSA and azide free) storage buffer at a concentration of 1 mg/mL, ready for conjugation.

This conjugation ready format makes antibodies ideal for use in many applications including: ELISAs, multiplex assays requiring matched pairs, mass cytometry, and multiplex imaging applications. Antibody use should be optimized by the end user for each application and assay.

Storage

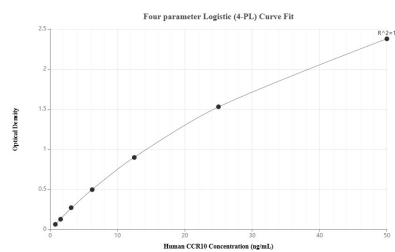
Storage:
Store at -80°C.

Storage Buffer:
PBS Only

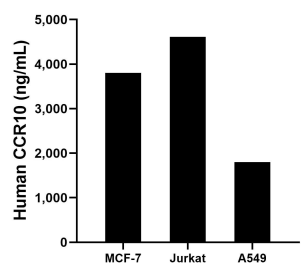
For technical support and original validation data for this product please contact:
T: 1 (888) 4PTGLAB (1-888-478-4522) (toll free in USA), or 1(312) 455-8498 (outside USA)
E: proteintech@ptglab.com
W: ptglab.com

This product is exclusively available under Proteintech Group brand and is not available to purchase from any other manufacturer.

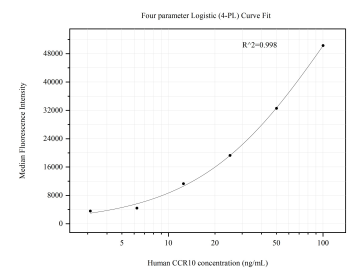
Selected Validation Data



Sandwich ELISA standard curve of MP50812-1, Human CCR10 Monoclonal Matched Antibody Pair - PBS only. 60574-1-PBS was coated to a plate as the capture antibody and incubated with serial dilutions of standard Ag17212. 60574-2-PBS was HRP conjugated as the detection antibody. Range: 0.781-50 ng/mL



The mean CCR10 concentration was determined to be 3,805.97 ng/mL in MCF-7 cell extract based on a 1.3 mg/mL extract load, 4,613.54 ng/mL in Jurkat cell extract based on a 1.9 mg/mL extract load and 1,804.16 ng/mL in A549 cell extract based on a 3.1 mg/mL extract load.



Cytometric bead array standard curve of MP50812-1, CCR10 Monoclonal Matched Antibody Pair, PBS Only. Capture antibody: 60574-1-PBS. Detection antibody: 60574-2-PBS. Standard: Ag17212. Range: 3.125-100 ng/mL