

For Research Use Only

IGF2BP2 Monoclonal antibody

Catalog Number: 60647-1-Ig



Basic Information

Catalog Number:

60647-1-Ig

Size:

150ul , Concentration: 1000 ug/ml by Nanodrop;

Source:

Mouse

Isotype:

IgG2b

Immunogen Catalog Number:

AG33681

GenBank Accession Number:

BC021290

GeneID (NCBI):

10644

UNIPROT ID:

Q9Y6M1

Full Name:

insulin-like growth factor 2 mRNA binding protein 2

Calculated MW:

65 kDa

Observed MW:

65-70 kDa

Purification Method:

Protein A purification

CloneNo.:

1E5H8

Recommended Dilutions:

WB 1:5000-1:50000

Applications

Tested Applications:

WB, ELISA

Species Specificity:

human

Positive Controls:

WB : HepG2 cells, HT-1080 cells, A431 cells, HuH-7 cells

Background Information

Insulin-like growth factor 2 mRNA-binding protein 2(IGF2BP2), is a member of a family of mRNA binding protein, which can bind to several mammalian cells' mRNAs. Thus it may involve in the regulation of translation of mRNA. IGF2BP2's polymorphisms is risk factor for developing type 2 diabetes. This antibody raise against part of N-terminus of human IGF2BP2. IGF2BP2 has some isoforms with the MW of 54-66 kDa. Some literature has reported that multiple bands can be detected (PMID: 22427968, 36322753, 23069990).

Storage

Storage:

Store at -20°C. Stable for one year after shipment.

Storage Buffer:

PBS with 0.02% sodium azide and 50% glycerol pH 7.3.

Aliquoting is unnecessary for -20°C storage

*** 20ul sizes contain 0.1% BSA

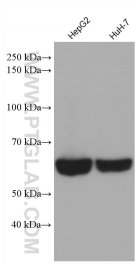
For technical support and original validation data for this product please contact:

T: 1 (888) 4PTGLAB (1-888-478-4522) (toll free in USA), or 1(312) 455-8498 (outside USA)

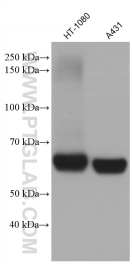
E: proteintech@ptglab.com
W: ptglab.com

This product is exclusively available under Proteintech Group brand and is not available to purchase from any other manufacturer.

Selected Validation Data



Various lysates were subjected to SDS PAGE followed by western blot with 60647-1-Ig (IGF2BP2 antibody) at dilution of 1:10000 incubated at room temperature for 1.5 hours.



Various lysates were subjected to SDS PAGE followed by western blot with 60647-1-Ig (IGF2BP2 antibody) at dilution of 1:10000 incubated at room temperature for 1.5 hours.