

For Research Use Only

SOST/Sclerostin Monoclonal antibody, PBS Only (Detector)

Catalog Number: 60726-3-PBS



Basic Information

Catalog Number: 60726-3-PBS	GenBank Accession Number: BC101086	Purification Method: Protein G purification
Size: 100ug , Concentration: 1 mg/ml by Nanodrop;	GeneID (NCBI): 50964	CloneNo.: 1G6E11
Source: Mouse	UNIPROT ID: Q9BQB4	
Isotype: IgG1	Full Name: sclerosteosis	
	Calculated MW: 213 aa, 24 kDa	

Applications

Tested Applications:
Cytometric bead array, Sandwich ELISA, Indirect ELISA,
Sample test

Species Specificity:
human

Product Information

60726-3-PBS targets SOST/Sclerostin as part of a matched antibody pair:

MP51041-2: 60726-1-PBS capture and 60726-3-PBS detection (validated in Cytometric bead array, Sandwich ELISA)

Unconjugated mouse monoclonal antibody pair in PBS only (BSA and azide free) storage buffer at a concentration of 1 mg/mL, ready for conjugation.

This conjugation ready format makes antibodies ideal for use in many applications including: ELISAs, multiplex assays requiring matched pairs, mass cytometry, and multiplex imaging applications. Antibody use should be optimized by the end user for each application and assay.

Storage

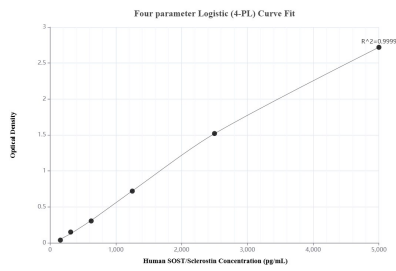
Storage:
Store at -80°C.

Storage Buffer:
PBS Only

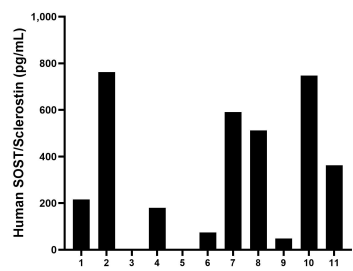
For technical support and original validation data for this product please contact:
T: 1 (888) 4PTGLAB (1-888-478-4522) (toll free in USA), or 1(312) 455-8498 (outside USA)
E: proteintech@ptglab.com
W: ptglab.com

This product is exclusively available under Proteintech Group brand and is not available to purchase from any other manufacturer.

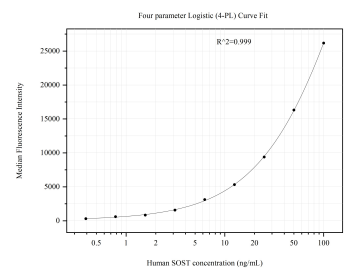
Selected Validation Data



Sandwich ELISA standard curve of MP51041-2, Human SOST/Sclerostin Monoclonal Matched Antibody Pair - PBS only. 60726-1-PBS was coated to a plate as the capture antibody and incubated with serial dilutions of standard Eg0407. 60726-3-PBS was HRP conjugated as the detection antibody. Range: 156-5000 pg/mL



Serum of eleven individual healthy human donors was measured. The SOST/Sclerostin concentration of detected samples was determined to be 388.2 pg/mL with a range of ND-762.5 pg/mL



Cytometric bead array standard curve of MP51041-2, SOST Monoclonal Matched Antibody Pair, PBS Only. Capture antibody: 60726-1-PBS. Detection antibody: 60726-3-PBS. Standard:Eg0407. Range: 0.391-100 ng/mL