

For Research Use Only

NGFR/TNFRSF16 Monoclonal antibody, PBS Only (Capture)

Catalog Number: 60739-1-PBS



Basic Information

Catalog Number: 60739-1-PBS	GenBank Accession Number: NM_002507	Purification Method: Protein A purification
Size: 100ug , Concentration: 1 mg/ml by Nanodrop;	GeneID (NCBI): 4804	CloneNo.: 1G10A6
Source: Mouse	UNIPROT ID: P08138	
Isotype: IgG2b	Full Name: nerve growth factor receptor (TNFR superfamily, member 16)	
Immunogen Catalog Number: AG29849	Calculated MW: 45 kDa	

Applications

Tested Applications:
Cytometric bead array, Sandwich ELISA, Indirect ELISA, Sample test

Species Specificity:
human

Product Information

60739-1-PBS targets NGFR/TNFRSF16 as part of a matched antibody pair:

MP51068-1: 60739-1-PBS capture and 60739-2-PBS detection (validated in Cytometric bead array)

MP51068-2: 60739-1-PBS capture and 60739-3-PBS detection (validated in Cytometric bead array, Sandwich ELISA)

Unconjugated mouse monoclonal antibody pair in PBS only (BSA and azide free) storage buffer at a concentration of 1 mg/mL, ready for conjugation.

This conjugation ready format makes antibodies ideal for use in many applications including: ELISAs, multiplex assays requiring matched pairs, mass cytometry, and multiplex imaging applications. Antibody use should be optimized by the end user for each application and assay.

Storage

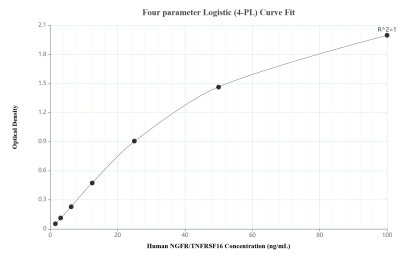
Storage:
Store at -80°C.

Storage Buffer:
PBS Only

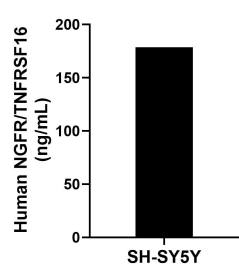
For technical support and original validation data for this product please contact:
T: 1 (888) 4PTGLAB (1-888-478-4522) (toll free in USA), or 1(312) 455-8498 (outside USA)
E: proteintech@ptglab.com
W: ptglab.com

This product is exclusively available under Proteintech Group brand and is not available to purchase from any other manufacturer.

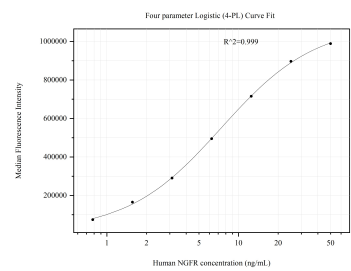
Selected Validation Data



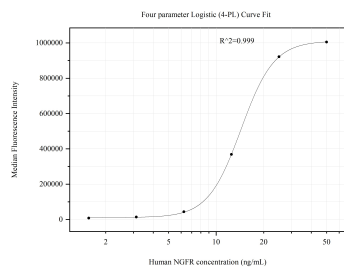
Sandwich ELISA standard curve of MP51068-2, Human NGFR/TNFRSF16 Monoclonal Matched Antibody Pair - PBS only. 60739-1-PBS was coated to a plate as the capture antibody and incubated with serial dilutions of standard Ag29849. 60739-3-PBS was HRP conjugated as the detection antibody. Range: 1.56-100 ng/mL



The mean NGFR/TNFRSF16 concentration was determined to be 178.67 ng/mL in SH-SY5Y cell extract based on a 3.20 mg/mL extract load.



Cytometric bead array standard curve of MP51068-1, p75NTR Monoclonal Matched Antibody Pair, PBS Only. Capture antibody: 60739-1-PBS. Detection antibody: 60739-2-PBS. Standard:Ag29849. Range: 0.781-50 ng/mL



Cytometric bead array standard curve of MP51068-2, p75NTR Monoclonal Matched Antibody Pair, PBS Only. Capture antibody: 60739-1-PBS. Detection antibody: 60739-3-PBS. Standard:Ag29849. Range: 1.563-50 ng/mL