

For Research Use Only

# NGFR/TNFRSF16 Monoclonal antibody, PBS Only (Detector)

Catalog Number: 60739-3-PBS



## Basic Information

<b>Catalog Number:</b> 60739-3-PBS	<b>GenBank Accession Number:</b> NM_002507	<b>Purification Method:</b> Protein G purification
<b>Size:</b> 100ug , Concentration: 1 mg/ml by Nanodrop;	<b>GeneID (NCBI):</b> 4804	<b>CloneNo.:</b> 2F8G4
<b>Source:</b> Mouse	<b>UNIPROT ID:</b> P08138	
<b>Isotype:</b> IgG1	<b>Full Name:</b> nerve growth factor receptor (TNFR superfamily, member 16)	
<b>Immunogen Catalog Number:</b> AG29849	<b>Calculated MW:</b> 45 kDa	

## Applications

**Tested Applications:**  
Cytometric bead array, Sandwich ELISA, Indirect ELISA, Sample test

**Species Specificity:**  
human

## Product Information

60739-3-PBS targets NGFR/TNFRSF16 as part of a matched antibody pair:

MP51068-2: 60739-1-PBS capture and 60739-3-PBS detection (validated in Cytometric bead array, Sandwich ELISA)

Unconjugated mouse monoclonal antibody pair in PBS only (BSA and azide free) storage buffer at a concentration of 1 mg/mL, ready for conjugation.

This conjugation ready format makes antibodies ideal for use in many applications including: ELISAs, multiplex assays requiring matched pairs, mass cytometry, and multiplex imaging applications. Antibody use should be optimized by the end user for each application and assay.

## Storage

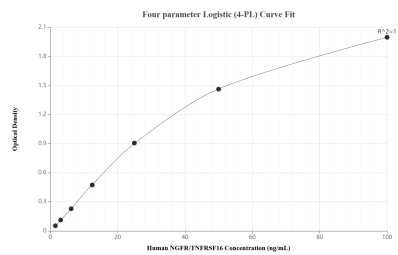
**Storage:**  
Store at -80°C.

**Storage Buffer:**  
PBS Only

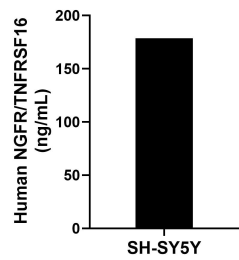
For technical support and original validation data for this product please contact:  
T: 1 (888) 4PTGLAB (1-888-478-4522) (toll free in USA), or 1(312) 455-8498 (outside USA)  
E: [proteintech@ptglab.com](mailto:proteintech@ptglab.com)  
W: [ptglab.com](http://ptglab.com)

This product is exclusively available under Proteintech Group brand and is not available to purchase from any other manufacturer.

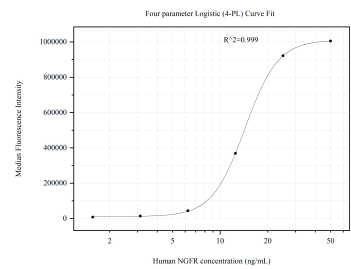
## Selected Validation Data



Sandwich ELISA standard curve of MP51068-2, Human NGFR/TNFRSF16 Monoclonal Matched Antibody Pair - PBS only. 60739-1-PBS was coated to a plate as the capture antibody and incubated with serial dilutions of standard Ag29849. 60739-3-PBS was HRP conjugated as the detection antibody. Range: 1.56-100 ng/mL



The mean NGFR/TNFRSF16 concentration was determined to be 178.67 ng/mL in SH-SY5Y cell extract based on a 3.20 mg/mL extract load.



Cytometric bead array standard curve of MP51068-2, p75NTR Monoclonal Matched Antibody Pair, PBS Only. Capture antibody: 60739-1-PBS. Detection antibody: 60739-3-PBS. Standard: Ag29849. Range: 1.563-50 ng/mL