

For Research Use Only

# TGFBR1 Monoclonal antibody, PBS Only (Detector)

Catalog Number: 60748-4-PBS



## Basic Information

|  |  |   |
|--|--|---|
| <b>Catalog Number:</b><br>60748-4-PBS                      | <b>GenBank Accession Number:</b><br>NM_004612                    | <b>Purification Method:</b><br>Protein G purification |
| <b>Size:</b><br>100ug, Concentration: 1 mg/ml by Nanodrop; | <b>GeneID (NCBI):</b><br>7046                                    | <b>CloneNo.:</b><br>1C8H1                             |
| <b>Source:</b><br>Mouse                                    | <b>UNIPROT ID:</b><br>P36897                                     |   |
| <b>Isotype:</b><br>IgG1                                    | <b>Full Name:</b><br>transforming growth factor, beta receptor 1 |   |
| <b>Immunogen Catalog Number:</b><br>AG31620                | <b>Calculated MW:</b><br>56KD                                    |   |

## Applications

**Tested Applications:**  
Cytometric bead array, Sandwich ELISA, Indirect ELISA, Sample test

**Species Specificity:**  
human

## Product Information

60748-4-PBS targets TGFBR1 as part of a matched antibody pair:

MP51081-2: 60748-3-PBS capture and 60748-4-PBS detection (validated in Cytometric bead array, Sandwich ELISA)

Unconjugated mouse monoclonal antibody pair in PBS only (BSA and azide free) storage buffer at a concentration of 1 mg/mL, ready for conjugation.

This conjugation ready format makes antibodies ideal for use in many applications including: ELISAs, multiplex assays requiring matched pairs, mass cytometry, and multiplex imaging applications. Antibody use should be optimized by the end user for each application and assay.

## Storage

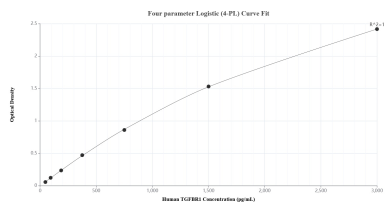
**Storage:**  
Store at -80°C.

**Storage Buffer:**  
PBS Only

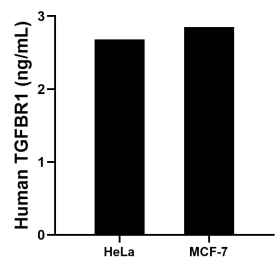
For technical support and original validation data for this product please contact:  
T: 1 (888) 4PTGLAB (1-888-478-4522) (toll free in USA), or 1(312) 455-8498 (outside USA)  
E: [proteintech@ptglab.com](mailto:proteintech@ptglab.com)  
W: [ptglab.com](http://ptglab.com)

This product is exclusively available under Proteintech Group brand and is not available to purchase from any other manufacturer.

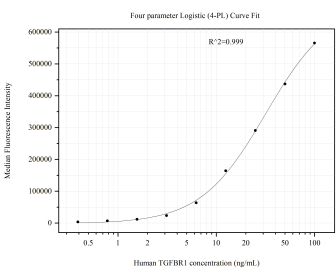
## Selected Validation Data



Sandwich ELISA standard curve of MP51081-2, Human TGFBR1 Monoclonal Matched Antibody Pair - PBS only. 60748-3-PBS was coated to a plate as the capture antibody and incubated with serial dilutions of standard Ag31620. 60748-4-PBS was HRP conjugated as the detection antibody. Range: 46.9-3000 pg/mL.



The mean TGFBR1 concentration was determined to be 2.7 ng/mL in HeLa cell extract based on a 1.8 mg/mL extract load and 2.9 ng/mL in MCF-7 cell extract based on a 2.4 mg/mL extract load.



Cytometric bead array standard curve of MP51081-2, TGFBR1 Monoclonal Matched Antibody Pair, PBS Only. Capture antibody: 60748-3-PBS. Detection antibody: 60748-4-PBS. Standard: Ag31620. Range: 0.391-100 ng/mL