

For Research Use Only

CA15-3,MUC1 Monoclonal antibody, PBS Only (Capture)

Catalog Number:60749-3-PBS



Basic Information

Catalog Number: 60749-3-PBS	GenBank Accession Number: BC120975	Purification Method: Protein G purification
Size: 100ug, Concentration: 1 mg/ml by Nanodrop;	GeneID (NCBI): 4582	CloneNo.: 2F7A6
Source: Mouse	UNIPROT ID: P15941	
Isotype: IgG1	Full Name: mucin 1, cell surface associated	
Immunogen Catalog Number: AG17660	Calculated MW: 1264 aa, 123 kDa	

Applications

Tested Applications:
Cytometric bead array, Sandwich ELISA, Indirect ELISA,
Sample test

Species Specificity:
human

Product Information

60749-3-PBS targets CA15-3,MUC1 as part of a matched antibody pair:

MP51087-1: 60749-3-PBS capture and 60749-4-PBS detection (validated in Cytometric bead array)

MP51087-2: 60749-3-PBS capture and 60749-5-PBS detection (validated in Cytometric bead array, Sandwich ELISA)

Unconjugated mouse monoclonal antibody pair in PBS only (BSA and azide free) storage buffer at a concentration of 1 mg/mL, ready for conjugation.

This conjugation ready format makes antibodies ideal for use in many applications including: ELISAs, multiplex assays requiring matched pairs, mass cytometry, and multiplex imaging applications. Antibody use should be optimized by the end user for each application and assay.

Storage

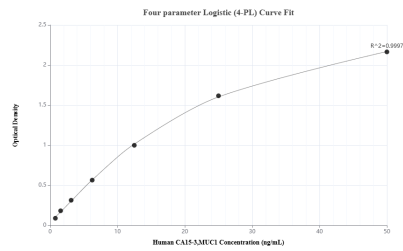
Storage:
Store at -80°C.

Storage Buffer:
PBS Only

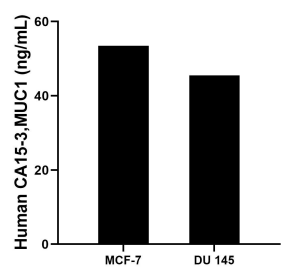
For technical support and original validation data for this product please contact:
T: 1 (888) 4PTGLAB (1-888-478-4522) (toll free in USA), or 1(312) 455-8498 (outside USA)
E: proteintech@ptglab.com
W: ptglab.com

This product is exclusively available under Proteintech Group brand and is not available to purchase from any other manufacturer.

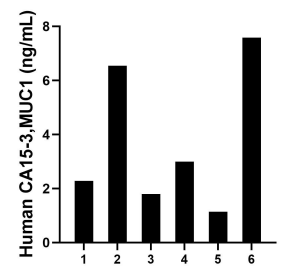
Selected Validation Data



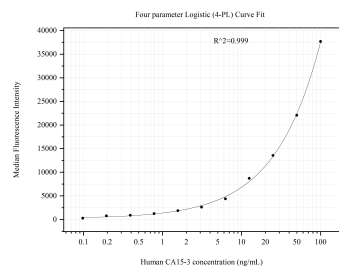
Sandwich ELISA standard curve of MP51087-2, Human CA15-3,MUC1 Monoclonal Matched Antibody Pair - PBS only. 60749-3-PBS was coated to a plate as the capture antibody and incubated with serial dilutions of standard Ag17660. 60749-5-PBS was HRP conjugated as the detection antibody. Range: 0.78-50 ng/mL



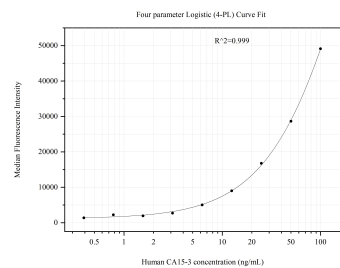
The mean CA15-3,MUC1 concentration was determined to be 53.46 ng/mL in MCF-7 cell extract based on a 1.3 mg/mL extract load and 45.49 ng/mL in DU 145 cell extract based on a 2.0 mg/mL extract load.



Serum of six individual healthy human donors was measured. The human CA15-3,MUC1 concentration of detected samples was determined to be 3.72 ng/mL with a range of 1.14-7.58 ng/mL



Cytometric bead array standard curve of MP51087-1, CA15-3,MUC1 Monoclonal Matched Antibody Pair, PBS Only. Capture antibody: 60749-3-PBS. Detection antibody: 60749-4-PBS. Standard:Ag17660. Range: 0.098-100 ng/mL



Cytometric bead array standard curve of MP51087-2, CA15-3,MUC1 Monoclonal Matched Antibody Pair, PBS Only. Capture antibody: 60749-3-PBS. Detection antibody: 60749-5-PBS. Standard:Ag17660. Range: 0.391-100 ng/mL