

For Research Use Only

# Ferritin heavy chain Monoclonal antibody, PBS Only

Catalog Number: 60875-5-PBS



## Basic Information

Catalog Number:

60875-5-PBS

Size:

100ug, Concentration: 1 mg/ml by Nanodrop;

Source:

Mouse

Isotype:

IgG2a

Immunogen Catalog Number:

AG21386

GenBank Accession Number:

BC000857

GeneID (NCBI):

2495

UNIPROT ID:

P02794

Full Name:

ferritin, heavy polypeptide 1

Calculated MW:

183 aa, 21 kDa

Observed MW:

21 kDa

Purification Method:

Protein A purification

CloneNo.:

3G8D7

## Applications

Tested Applications:

WB, Indirect ELISA

Species Specificity:

human, rat, rabbit

## Background Information

Ferritin heavy chain (FTH1, ferritin, heavy polypeptide 1), as a 21 kDa subunit of the ferritin complex, exhibits ferroxidase activity, which serves an essential role in catalyzing the conversion of the ferrous ions ( $\text{Fe}^{2+}$ ) to the ferric form ( $\text{Fe}^{3+}$ ). FTH1 regulates angiogenesis during inflammation and malignancy by binding to high molecular weight kininogen (HKa) and blocking its anti-angiogenic activity on endothelial cells in vitro and in vivo (PMID: 33260500). FTH1 has been shown to protect proximal tube epithelial cells and kidneys against the activity of free iron in reactive oxygen species generation. FTH1 plays an important role in the maintenance of the cellular iron balance in ferroptosis.

## Storage

Storage:

Store at  $-80^{\circ}\text{C}$ .

Storage Buffer:

PBS only, pH7.3

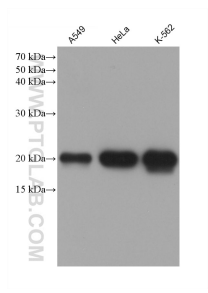
For technical support and original validation data for this product please contact:

T: 1 (888) 4PTGLAB (1-888-478-4522) (toll free in USA), or 1(312) 455-8498 (outside USA)

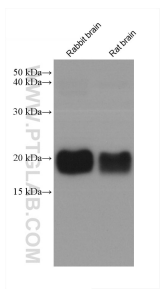
E: [proteintech@ptglab.com](mailto:proteintech@ptglab.com)  
W: [ptglab.com](http://ptglab.com)

This product is exclusively available under Proteintech Group brand and is not available to purchase from any other manufacturer.

## Selected Validation Data



Various lysates were subjected to SDS PAGE followed by western blot with 60875-5-Ig (Ferritin heavy chain antibody) at dilution of 1:10000 incubated at room temperature for 1.5 hours. This data was developed using the same antibody clone with 60875-5-PBS in a different storage buffer formulation.



Various lysates were subjected to SDS PAGE followed by western blot with 60875-5-Ig (Ferritin heavy chain antibody) at dilution of 1:10000 incubated at room temperature for 1.5 hours. This data was developed using the same antibody clone with 60875-5-PBS in a different storage buffer formulation.