

For Research Use Only

SLC12A2 Monoclonal antibody, PBS Only (Detector)

Catalog Number: 60887-2-PBS



Basic Information

Catalog Number:

60887-2-PBS

Size:

100ug , Concentration: 1 mg/ml by Nanodrop;

Source:

Mouse

Isotype:

IgG1

Immunogen Catalog Number:

AG27901

GenBank Accession Number:

BC033003

GeneID (NCBI):

6558

UNIPROT ID:

P55011

Full Name:

solute carrier family 12 (sodium/potassium/chloride transporters), member 2

Calculated MW:

131 kDa

Purification Method:

Protein G Magarose purification

CloneNo.:

2B8C4

Applications

Tested Applications:

Cytometric bead array, Indirect ELISA

Species Specificity:

human

Product Information

60887-2-PBS targets SLC12A2 as part of a matched antibody pair:

MP51301-1: 60887-1-PBS capture and 60887-2-PBS detection (validated in Cytometric bead array)

MP51301-2: 60887-3-PBS capture and 60887-2-PBS detection (validated in Cytometric bead array)

Unconjugated mouse monoclonal antibody pair in PBS only (BSA and azide free) storage buffer at a concentration of 1 mg/mL, ready for conjugation.

This conjugation ready format makes antibodies ideal for use in many applications including: ELISAs, multiplex assays requiring matched pairs, mass cytometry, and multiplex imaging applications. Antibody use should be optimized by the end user for each application and assay.

Storage

Storage:

Store at -80°C.

Storage Buffer:

PBS only, pH7.3

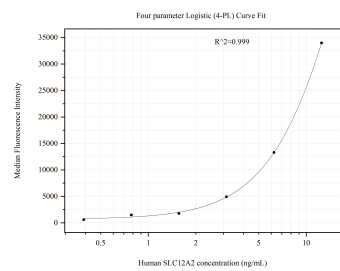
For technical support and original validation data for this product please contact:

T: 1 (888) 4PTGLAB (1-888-478-4522) (toll free in USA), or 1(312) 455-8498 (outside USA)

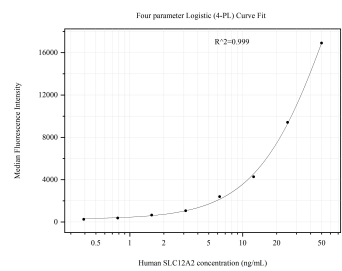
E: proteintech@ptglab.com
W: ptglab.com

This product is exclusively available under Proteintech Group brand and is not available to purchase from any other manufacturer.

Selected Validation Data



Cytometric bead array standard curve of MP51301-1, SLC12A2 Monoclonal Matched Antibody Pair, PBS Only. Capture antibody: 60887-1-PBS. Detection antibody: 60887-2-PBS. Standard:Ag27901. Range: 0.195-12.5 ng/mL



Cytometric bead array standard curve of MP51301-2, SLC12A2 Monoclonal Matched Antibody Pair, PBS Only. Capture antibody: 60887-3-PBS. Detection antibody: 60887-2-PBS. Standard:Ag27901. Range: 0.391-50 ng/mL