

For Research Use Only

CFLAR Monoclonal antibody, PBS Only (Capture)

Catalog Number: 60901-1-PBS



Basic Information

Catalog Number: 60901-1-PBS	GenBank Accession Number: BC001602	Purification Method: Protein G purification
Size: 100ug , Concentration: 1 mg/ml by Nanodrop;	GeneID (NCBI): 8837	CloneNo.: 3D12F5
Source: Mouse	UNIPROT ID: O15519	
Isotype: IgG1	Full Name: CASP8 and FADD-like apoptosis regulator	
Immunogen Catalog Number: AG31024	Calculated MW: 52 kDa	

Applications

Tested Applications:
Cytometric bead array, Indirect ELISA, Sample test

Species Specificity:
human

Product Information

60901-1-PBS targets CFLAR as part of a matched antibody pair:

MP51317-1: 60901-1-PBS capture and 60901-2-PBS detection (validated in Cytometric bead array)

MP51317-2: 60901-1-PBS capture and 60901-3-PBS detection (validated in Cytometric bead array)

MP51317-3: 60901-1-PBS capture and 60901-4-PBS detection (validated in Cytometric bead array)

MP51317-4: 60901-1-PBS capture and 60901-5-PBS detection (validated in Cytometric bead array)

Unconjugated mouse monoclonal antibody pair in PBS only (BSA and azide free) storage buffer at a concentration of 1 mg/mL, ready for conjugation.

This conjugation ready format makes antibodies ideal for use in many applications including: ELISAs, multiplex assays requiring matched pairs, mass cytometry, and multiplex imaging applications. Antibody use should be optimized by the end user for each application and assay.

Storage

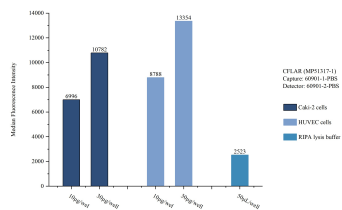
Storage:
Store at -80°C.

Storage Buffer:
PBS only, pH7.3

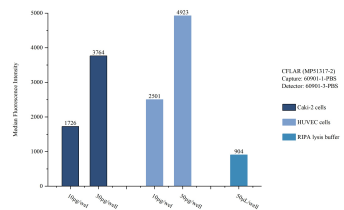
For technical support and original validation data for this product please contact:
T: 1 (888) 4PTGLAB (1-888-478-4522) (toll free in USA), or 1(312) 455-8498 (outside USA)
E: proteintech@ptglab.com
W: ptglab.com

This product is exclusively available under Proteintech Group brand and is not available to purchase from any other manufacturer.

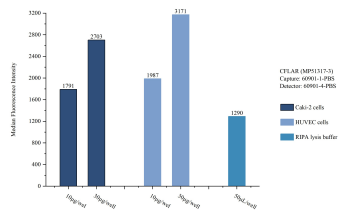
Selected Validation Data



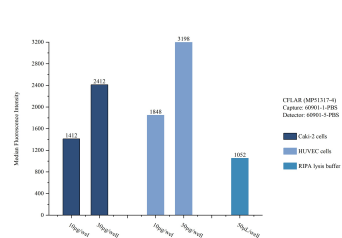
Sample test of MP51317-1, CFLAR Monoclonal Matched Antibody Pair, PBS Only. Capture antibody: 60901-1-PBS. Detection antibody: 60901-2-PBS.



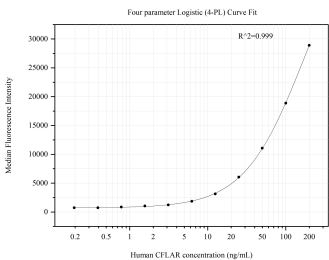
Sample test of MP51317-2, CFLAR Monoclonal Matched Antibody Pair, PBS Only. Capture antibody: 60901-1-PBS. Detection antibody: 60901-3-PBS.



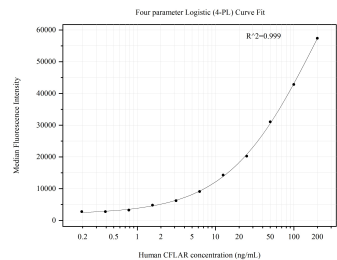
Sample test of MP51317-3, CFLAR Monoclonal Matched Antibody Pair, PBS Only. Capture antibody: 60901-1-PBS. Detection antibody: 60901-4-PBS.



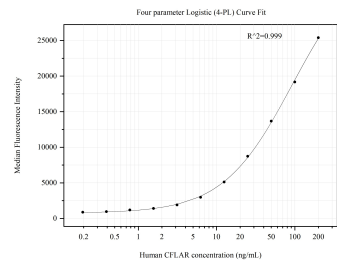
Sample test of MP51317-4, CFLAR Monoclonal Matched Antibody Pair, PBS Only. Capture antibody: 60901-1-PBS. Detection antibody: 60901-5-PBS.



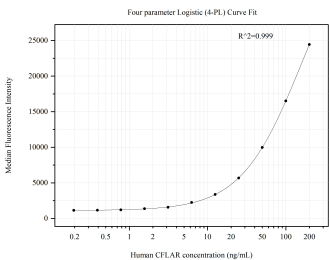
Cytometric bead array standard curve of MP51317-1, CFLAR Monoclonal Matched Antibody Pair, PBS Only. Capture antibody: 60901-1-PBS. Detection antibody: 60901-2-PBS. Standard:Ag31024. Range: 0.781-200 ng/mL



Cytometric bead array standard curve of MP51317-2, CFLAR Monoclonal Matched Antibody Pair, PBS Only. Capture antibody: 60901-1-PBS. Detection antibody: 60901-3-PBS. Standard:Ag31024. Range: 0.391-200 ng/mL



Cytometric bead array standard curve of MP51317-3, CFLAR Monoclonal Matched Antibody Pair, PBS Only. Capture antibody: 60901-1-PBS. Detection antibody: 60901-4-PBS. Standard:Ag31024. Range: 0.391-200 ng/mL



Cytometric bead array standard curve of MP51317-4, CFLAR Monoclonal Matched Antibody Pair, PBS Only. Capture antibody: 60901-1-PBS. Detection antibody: 60901-5-PBS. Standard:Ag31024. Range: 0.391-200 ng/mL