

For Research Use Only

EPHB2 Monoclonal antibody

Catalog Number:60908-3-Ig



Basic Information

Catalog Number: 60908-3-Ig	GenBank Accession Number: BC018763	Purification Method: Protein A purification
Size: 150ul , Concentration: 1000 ug/ml by Nanodrop;	GeneID (NCBI): 2048	CloneNo.: 2F3H9
Source: Mouse	UNIPROT ID: P29323	Recommended Dilutions: WB: 1:2000-1:10000
Isotype: IgG2a	Full Name: EPH receptor B2	
Immunogen Catalog Number: AG28796	Calculated MW: 987 aa, 108 kDa	
	Observed MW: 110-120 kDa	

Applications

Tested Applications: WB, ELISA	Positive Controls: WB : Saos-2 cells, HeLa cells, U2OS cells, rat brain tissue, mouse brain tissue, rabbit brain tissue
Species Specificity: human, mouse, rat, pig, rabbit	

Background Information

EPHB2 is a receptor tyrosine kinase that mediates ephrin-dependent bidirectional signaling to control cell positioning, boundary formation, and tissue architecture. Expressed in the nervous system and intestinal epithelium, EPHB2 regulates axon guidance, synaptic plasticity, and epithelial organization. Loss or dysregulation of EPHB2 contributes to colorectal cancer progression and altered neural connectivity, underscoring its central role in developmental patterning and tissue homeostasis.

Storage

Storage:
Store at -20°C. Stable for one year after shipment.
Storage Buffer:
PBS with 0.02% sodium azide and 50% glycerol, pH7.3
Aliquoting is unnecessary for -20°C storage

*** 20ul sizes contain 0.1% BSA

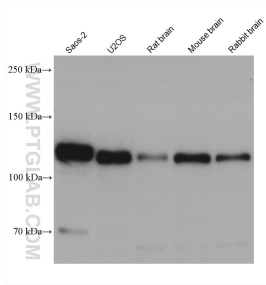
For technical support and original validation data for this product please contact:

T: 1 (888) 4PTGLAB (1-888-478-4522) (toll free in USA), or 1(312) 455-8498 (outside USA)

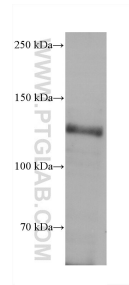
E: proteintech@ptglab.com
W: ptglab.com

This product is exclusively available under Proteintech Group brand and is not available to purchase from any other manufacturer.

Selected Validation Data



Various lysates were subjected to SDS PAGE followed by western blot with 60908-3-Ig (EPHB2 antibody) at dilution of 1:5000 incubated at room temperature for 1.5 hours.



HeLa cells were subjected to SDS PAGE followed by western blot with 60908-3-Ig (EPHB2 antibody) at dilution of 1:5000 incubated at room temperature for 1.5 hours.