

For Research Use Only

# GLP1R Monoclonal antibody

Catalog Number: 60931-1-Ig



## Basic Information

<b>Catalog Number:</b> 60931-1-Ig	<b>GenBank Accession Number:</b> BC112126	<b>Purification Method:</b> Protein G purification
<b>Size:</b> 150ul , Concentration: 1749 µg/ml by Nanodrop;	<b>GeneID (NCBI):</b> 2740	<b>CloneNo.:</b> 1A4G5
<b>Source:</b> Mouse	<b>UNIPROT ID:</b> P43220	<b>Recommended Dilutions:</b> IF/ICC: 1:250-1:1000
<b>Isotype:</b> IgG1	<b>Full Name:</b> glucagon-like peptide 1 receptor	
<b>Immunogen Catalog Number:</b> AG23529	<b>Calculated MW:</b> 463 aa, 53 kDa	

## Applications

<b>Tested Applications:</b> IF/ICC, ELISA	<b>Positive Controls:</b> IF/ICC : rat pancreas tissue,
<b>Species Specificity:</b> human, rat	

## Background Information

GLP1R (glucagon-like peptide-1 receptor) is a G protein-coupled receptor belonging to the secretin receptor superfamily, also known as class B (PMID:34911028). GLP1R is widely distributed in pancreatic islets, muscles, the gastrointestinal tract, the lung, liver, pancreas, and other tissues or organs (PMID:35989517). Moreover, GLP1R agonist has been reported to induce autophagy of EC (Endometrial carcinoma) cells, and high GLP1R expression may be associated with good prognosis of EC patients, suggesting that GLP1R is likely to participate in the progression of EC (PMID:29907137). Moreover, regarding the molecular weight of GLP1R, research shows that the bands at ~50 kDa and ~100 kDa belong to the monomer and dimer states of GLP1R (PMID: 28609478).

## Storage

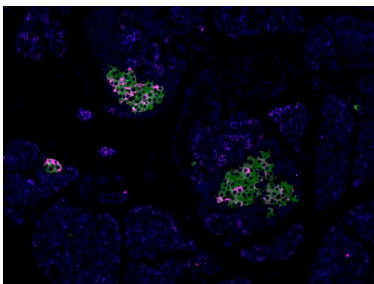
**Storage:**  
Store at -20°C. Stable for one year after shipment.  
**Storage Buffer:**  
PBS with 0.02% sodium azide and 50% glycerol, pH7.3  
**Aliquoting is unnecessary for -20°C storage**

\*\*\* 20ul sizes contain 0.1% BSA

For technical support and original validation data for this product please contact:  
T: 1 (888) 4PTGLAB (1-888-478-4522) (toll free in USA), or 1(312) 455-8498 (outside USA)  
E: [proteintech@ptglab.com](mailto:proteintech@ptglab.com)  
W: [ptglab.com](http://ptglab.com)

This product is exclusively available under Proteintech Group brand and is not available to purchase from any other manufacturer.

## Selected Validation Data



FFPE-rat pancreas tissue was stained with GLP1R monoclonal antibody (Cat.NO. 60931-1-Ig) at 1:500 followed by detection with Multi-rAb® Polymer HRP-Goat Anti-Rabbit/Mouse Universal Recombinant Secondary Antibody (H+L) (Cat.NO. RGAU011). CoraLite® Plus 647-Tyramide Reagent (Cat.NO. PR30025) was used for signal development (purple). The slide was then conducted HIER in pH 9.0 Tris-EDTA buffer followed by staining with INS

