

For Research Use Only

GLP1R Monoclonal antibody, PBS Only (Capture)

Catalog Number: 60931-1-PBS



Basic Information

Catalog Number: 60931-1-PBS	GenBank Accession Number: BC112126	Purification Method: Protein G purification
Size: 100ug , Concentration: 1 mg/ml by Nanodrop;	GeneID (NCBI): 2740	CloneNo.: 1A4G5
Source: Mouse	UNIPROT ID: P43220	
Isotype: IgG1	Full Name: glucagon-like peptide 1 receptor	
Immunogen Catalog Number: AG23529	Calculated MW: 463 aa, 53 kDa	

Applications

Tested Applications:
IF/ICC, Cytometric bead array, Indirect ELISA

Species Specificity:
human, rat

Product Information

60931-1-PBS targets GLP1R as part of a matched antibody pair:

MP51365-1: 60931-1-PBS capture and 60931-2-PBS detection (validated in Cytometric bead array)

Unconjugated mouse monoclonal antibody pair in PBS only (BSA and azide free) storage buffer at a concentration of 1 mg/mL, ready for conjugation.

This conjugation ready format makes antibodies ideal for use in many applications including: ELISAs, multiplex assays requiring matched pairs, mass cytometry, and multiplex imaging applications. Antibody use should be optimized by the end user for each application and assay.

Background Information

GLP1R (glucagon-like peptide-1 receptor) is a G protein-coupled receptor belonging to the secretin receptor superfamily, also known as class B (PMID:34911028). GLP1R is widely distributed in pancreatic islets, muscles, the gastrointestinal tract, the lung, liver, pancreas, and other tissues or organs (PMID:35989517). Moreover, GLP1R agonist has been reported to induce autophagy of EC (Endometrial carcinoma) cells, and high GLP1R expression may be associated with good prognosis of EC patients, suggesting that GLP1R is likely to participate in the progression of EC (PMID:29907137). Moreover, regarding the molecular weight of GLP1R, research shows that the bands at ~50 kDa and ~100 kDa belong to the monomer and dimer states of GLP1R (PMID: 28609478).

Storage

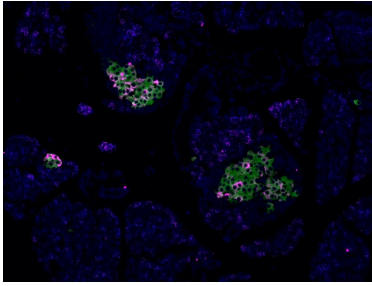
Storage:
Store at -80°C.

Storage Buffer:
PBS only, pH7.3

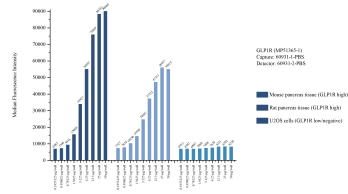
For technical support and original validation data for this product please contact:
T: 1 (888) 4PTGLAB (1-888-478-4522) (toll free in USA), or 1(312) 455-8498 (outside USA)
E: proteintech@ptglab.com
W: ptglab.com

This product is exclusively available under Proteintech Group brand and is not available to purchase from any other manufacturer.

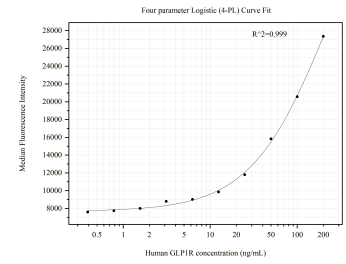
Selected Validation Data



FFPE-rat pancreas tissue was stained with GLP1R monoclonal antibody (Cat.NO. 60931-1-Ig) at 1:500 followed by detection with Multi-rab® Polymer HRP-Goat Anti-Rabbit/Mouse Universal Recombinant Secondary Antibody (H+L) (Cat.NO. RGAJ011). CoraLite®Plus 647-Tyramide Reagent (Cat.NO. PR30025) was used for signal development (purple). The slide was then conducted HIER in pH 9.0 Tris-EDTA buffer followed by staining with INS



Sample test of MP51365-1, GLP1R Monoclonal Matched Antibody Pair, PBS Only. Capture antibody: 60931-1-PBS. Detection antibody: 60931-2-PBS.



Cytometric bead array standard curve of MP51365-1, GLP1R Monoclonal Matched Antibody Pair, PBS Only. Capture antibody: 60931-1-PBS. Detection antibody: 60931-2-PBS. Standard: Ag23529. Range: 0.391-200 ng/mL