

For Research Use Only

# STK16 Monoclonal antibody, PBS Only

Catalog Number: 60949-3-PBS



## Basic Information

<b>Catalog Number:</b> 60949-3-PBS	<b>GenBank Accession Number:</b> BC002618	<b>Purification Method:</b> Protein G purification
<b>Size:</b> 100ug, Concentration: 1 mg/ml by Nanodrop;	<b>GeneID (NCBI):</b> 8576	<b>CloneNo.:</b> 2D6C6
<b>Source:</b> Mouse	<b>UNIPROT ID:</b> O75716	
<b>Isotype:</b> IgG1	<b>Full Name:</b> serine/threonine kinase 16	
<b>Immunogen Catalog Number:</b> AG30523	<b>Calculated MW:</b> 39.4 kDa	
	<b>Observed MW:</b> 35 kDa	

## Applications

**Tested Applications:**  
WB, Indirect ELISA

**Species Specificity:**  
human

## Background Information

STK16 is a Golgi-associated serine/threonine kinase that regulates membrane trafficking, Golgi organization, and cell-cycle progression. Through constitutive kinase activity and lipid-mediated membrane association, STK16 links vesicular transport with cellular proliferation and polarity. Its dysregulation in cancer highlights STK16 as a functional node connecting intracellular logistics and growth control.

## Storage

**Storage:**  
Store at -80°C.

**Storage Buffer:**  
PBS only, pH7.3

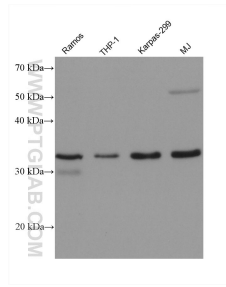
For technical support and original validation data for this product please contact:

T: 1 (888) 4PTGLAB (1-888-478-4522) (toll free in USA), or 1(312) 455-8498 (outside USA)

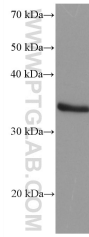
E: [proteintech@ptglab.com](mailto:proteintech@ptglab.com)  
W: [ptglab.com](http://ptglab.com)

**This product is exclusively available under Proteintech Group brand and is not available to purchase from any other manufacturer.**

## Selected Validation Data



Various lysates were subjected to SDS PAGE followed by western blot with 60949-3-Ig (STK16 antibody) at dilution of 1:5000 incubated at room temperature for 1.5 hours. This data was developed using the same antibody clone with 60949-3-PBS in a different storage buffer formulation.



LNCaP cells were subjected to SDS PAGE followed by western blot with 60949-3-Ig (STK16 antibody) at dilution of 1:5000 incubated at room temperature for 1.5 hours. This data was developed using the same antibody clone with 60949-3-PBS in a different storage buffer formulation.