

For Research Use Only

# GFM2 Monoclonal antibody

Catalog Number:60952-3-Ig



## Basic Information

|  |   |   |
|--|---|---|
| <b>Catalog Number:</b><br>60952-3-Ig                           | <b>GenBank Accession Number:</b><br>BC015712              | <b>Purification Method:</b><br>Protein G purification |
| <b>Size:</b><br>150ul , Concentration: 1000 ug/ml by Nanodrop; | <b>GeneID (NCBI):</b><br>84340                            | <b>CloneNo.:</b><br>2C8A5                             |
| <b>Source:</b><br>Mouse  | <b>UNIPROT ID:</b><br>Q96959                              | <b>Recommended Dilutions:</b><br>WB: 1:5000-1:50000   |
| <b>Isotype:</b><br>IgG1  | <b>Full Name:</b><br>G elongation factor, mitochondrial 2 |   |
| <b>Immunogen Catalog Number:</b><br>AG36976                    | <b>Calculated MW:</b><br>779 aa, 87 kDa                   |   |
|  | <b>Observed MW:</b><br>87 kDa                             |   |

## Applications

**Tested Applications:**  
WB, ELISA

**Species Specificity:**  
human, mouse, pig

**Positive Controls:**  
WB : LNCaP cells, NIH/3T3 cells, HeLa cells, K-562 cells, MJ cells, RKO cells, pig liver tissue

## Storage

**Storage:**  
Store at -20°C. Stable for one year after shipment.

**Storage Buffer:**  
PBS with 0.02% sodium azide and 50% glycerol, pH7.3

Aliquoting is unnecessary for -20°C storage

**\*\*\* 20ul sizes contain 0.1% BSA**

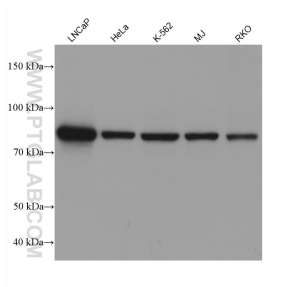
For technical support and original validation data for this product please contact:

T: 1 (888) 4PTGLAB (1-888-478-4522) (toll free in USA), or 1(312) 455-8498 (outside USA)

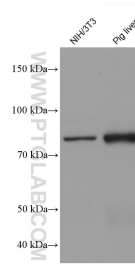
E: [proteintech@ptglab.com](mailto:proteintech@ptglab.com)  
W: [ptglab.com](http://ptglab.com)

**This product is exclusively available under Proteintech Group brand and is not available to purchase from any other manufacturer.**

## Selected Validation Data



Various lysates were subjected to SDS PAGE followed by western blot with 60952-3-Ig (GFM2 antibody) at dilution of 1:10000 incubated at room temperature for 1.5 hours.



Various lysates were subjected to SDS PAGE followed by western blot with 60952-3-Ig (GFM2 antibody) at dilution of 1:10000 incubated at room temperature for 1.5 hours.