

For Research Use Only

TAF11 Monoclonal antibody, PBS Only (Detector)

Catalog Number: 60962-2-PBS



Basic Information

Catalog Number: 60962-2-PBS	GenBank Accession Number: BC021972	Purification Method: Protein A Magarose purification
Size: 100ug , Concentration: 1 mg/ml by Nanodrop;	GeneID (NCBI): 6882	CloneNo.: 3B10G9
Source: Mouse	UNIPROT ID: Q15544	
Isotype: IgG2a	Full Name: TAF11 RNA polymerase II, TATA box binding protein (TBP)-associated factor, 28kDa	
Immunogen Catalog Number: AG9629	Calculated MW: 211 aa, 23 kDa	

Applications

Tested Applications:
Cytometric bead array, Indirect ELISA, Sample test

Species Specificity:
human

Product Information

60962-2-PBS targets TAF11 as part of a matched antibody pair:

MP51378-1: 60962-1-PBS capture and 60962-2-PBS detection (validated in Cytometric bead array)

Unconjugated mouse monoclonal antibody pair in PBS only (BSA and azide free) storage buffer at a concentration of 1 mg/mL, ready for conjugation.

This conjugation ready format makes antibodies ideal for use in many applications including: ELISAs, multiplex assays requiring matched pairs, mass cytometry, and multiplex imaging applications. Antibody use should be optimized by the end user for each application and assay.

Storage

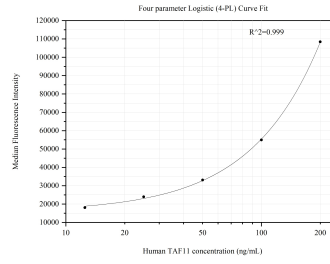
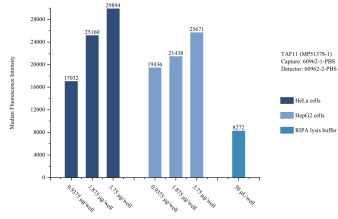
Storage:
Store at -80°C.

Storage Buffer:
PBS only, pH7.3

For technical support and original validation data for this product please contact:
T: 1 (888) 4PTGLAB (1-888-478-4522) (toll free in USA), or 1(312) 455-8498 (outside USA) E: proteintech@ptglab.com
W: ptglab.com

This product is exclusively available under Proteintech Group brand and is not available to purchase from any other manufacturer.

Selected Validation Data



Sample test of MP51378-1, TAF11 Monoclonal Matched Antibody Pair, PBS Only. Capture antibody: 60962-1-PBS. Detection antibody: 60962-2-PBS.

Cytometric bead array standard curve of MP51378-1, TAF11 Monoclonal Matched Antibody Pair, PBS Only. Capture antibody: 60962-1-PBS. Detection antibody: 60962-2-PBS. Standard: Ag9629. Range: 12.5-200 ng/mL.