

For Research Use Only

# BRD3 Monoclonal antibody, PBS Only (Capture)

Catalog Number: 60971-1-PBS



## Basic Information

<b>Catalog Number:</b> 60971-1-PBS	<b>GenBank Accession Number:</b> BC032124	<b>Purification Method:</b> Protein G purification
<b>Size:</b> 100ug , Concentration: 1 mg/ml by Nanodrop;	<b>GeneID (NCBI):</b> 8019	<b>CloneNo.:</b> 1C8C11
<b>Source:</b> Mouse	<b>UNIPROT ID:</b> Q15059	
<b>Isotype:</b> IgG1	<b>Full Name:</b> bromodomain containing 3	
<b>Immunogen Catalog Number:</b> AG33684	<b>Calculated MW:</b> 556 aa, 61 kDa	
	<b>Observed MW:</b> 95-105 kDa	

## Applications

**Tested Applications:**  
WB, Cytometric bead array, Indirect ELISA

**Species Specificity:**  
human, mouse, rat

## Product Information

60971-1-PBS targets BRD3 as part of a matched antibody pair:

MP51395-1: 60971-1-PBS capture and 60971-2-PBS detection (validated in Cytometric bead array)

Unconjugated mouse monoclonal antibody pair in PBS only (BSA and azide free) storage buffer at a concentration of 1 mg/mL, ready for conjugation.

This conjugation ready format makes antibodies ideal for use in many applications including: ELISAs, multiplex assays requiring matched pairs, mass cytometry, and multiplex imaging applications. Antibody use should be optimized by the end user for each application and assay.

## Background Information

BRD3 belongs to the BET family that is a small group of unique, highly conserved bromodomain-containing genes with four members in mouse and human. There are BRD2, BRD3, BRD4 and BRDT. And BET family proteins all localize in the nucleus, and contain two tandem N-terminal BRDs, an extra-terminal (ET) domain and a more divergent C-terminal recruitment domain (PMID:25849938). BRD2, BRD3, and BRD4 play key roles in transcription of genes required for both inflammation and cancer. Northern hybridization revealed that BRD3 is most abundant in testis, ovary, placenta, uterus, and brain (PMID:15261828; PMID:27451123).

## Storage

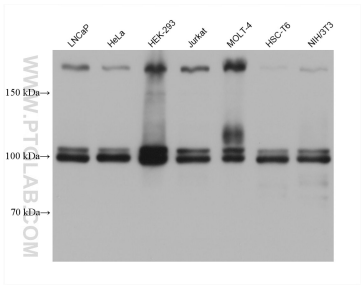
**Storage:**  
Store at -80°C.

**Storage Buffer:**  
PBS only, pH7.3

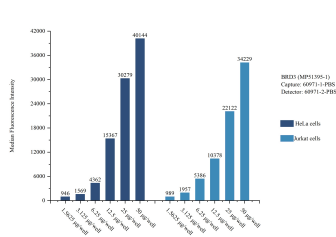
For technical support and original validation data for this product please contact:  
T: 1 (888) 4PTGLAB (1-888-478-4522) (toll free in USA), or 1(312) 455-8498 (outside USA)  
E: [proteintech@ptglab.com](mailto:proteintech@ptglab.com)  
W: [ptglab.com](http://ptglab.com)

This product is exclusively available under Proteintech Group brand and is not available to purchase from any other manufacturer.

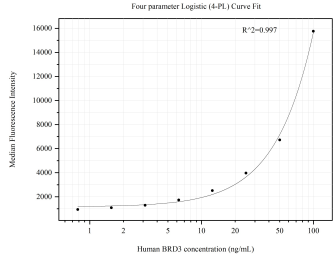
Selected Validation Data



Various lysates were subjected to SDS PAGE followed by western blot with 60971-1-Ig (BRD3 antibody) at dilution of 1:10000 incubated at room temperature for 1.5 hours. This data was developed using the same antibody clone with 60971-1-PBS in a different storage buffer formulation.



Sample test of MP51395-1, BRD3 Monoclonal Matched Antibody Pair, PBS Only. Capture antibody: 60971-1-PBS. Detection antibody: 60971-2-PBS.



Cytometric bead array standard curve of MP51395-1, BRD3 Monoclonal Matched Antibody Pair, PBS Only. Capture antibody: 60971-1-PBS. Detection antibody: 60971-2-PBS. Standard: Ag33684. Range: 0.781-100 ng/mL.