

For Research Use Only

# SLC7A1/CAT-1 Monoclonal antibody, PBS Only (Detector)

Catalog Number: 60978-2-PBS



## Basic Information

**Catalog Number:**

60978-2-PBS

**Size:**

100ug, Concentration: 1 mg/ml by  
Nanodrop;

**Source:**

Mouse

**Isotype:**

IgG2a

**Immunogen Catalog Number:**

AG5398

**GenBank Accession Number:**

BC063303

**GeneID (NCBI):**

6541

**UNIPROT ID:**

P30825

**Full Name:**

solute carrier family 7 (cationic  
amino acid transporter, y+ system),  
member 1

**Calculated MW:**

68 kDa

**Purification Method:**

Protein A Magarose purification

**CloneNo.:**

2E11G4

## Applications

**Tested Applications:**

Cytometric bead array, Indirect ELISA, Sample test

**Species Specificity:**

human

## Product Information

60978-2-PBS targets SLC7A1/CAT-1 as part of a matched antibody pair:

MP51409-1: 60978-1-PBS capture and 60978-2-PBS detection (validated in Cytometric bead array)

Unconjugated mouse monoclonal antibody pair in PBS only (BSA and azide free) storage buffer at a concentration of 1 mg/mL, ready for conjugation.

This conjugation ready format makes antibodies ideal for use in many applications including: ELISAs, multiplex assays requiring matched pairs, mass cytometry, and multiplex imaging applications. Antibody use should be optimized by the end user for each application and assay.

## Storage

**Storage:**

Store at -80°C.

**Storage Buffer:**

PBS only, pH7.3

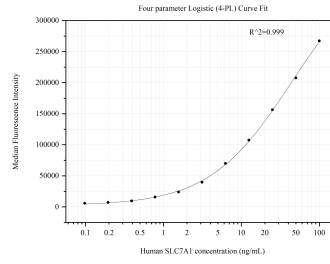
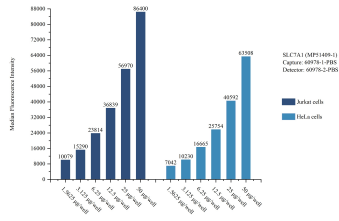
For technical support and original validation data for this product please contact:

T: 1 (888) 4PTGLAB (1-888-478-4522) (toll free  
in USA), or 1(312) 455-8498 (outside USA)

E: [proteintech@ptglab.com](mailto:proteintech@ptglab.com)  
W: [ptglab.com](http://ptglab.com)

**This product is exclusively available under Proteintech Group brand and is not available to purchase from any other manufacturer.**

## Selected Validation Data



Sample test of MP51409-1, SLC7A1 Monoclonal Matched Antibody Pair, PBS Only. Capture antibody: 60978-1-PBS. Detection antibody: 60978-2-PBS.

Cytometric bead array standard curve of MP51409-1, SLC7A1 Monoclonal Matched Antibody Pair, PBS Only. Capture antibody: 60978-1-PBS. Detection antibody: 60978-2-PBS. Standard: Ag5398. Range: 0.098-100 ng/mL