

For Research Use Only

SLC7A6 Monoclonal antibody, PBS Only (Detector)

Catalog Number: 60980-2-PBS



Basic Information

Catalog Number: 60980-2-PBS	GenBank Accession Number: BC028216	Purification Method: Protein G Magarose purification
Size: 100ug , Concentration: 1 mg/ml by Nanodrop;	GeneID (NCBI): 9057	CloneNo.: 3D11F11
Source: Mouse	UNIPROT ID: Q92536	
Isotype: IgG1	Full Name: solute carrier family 7 (cationic amino acid transporter, y+ system), member 6	
Immunogen Catalog Number: AG4924	Calculated MW: 515 aa, 57 kDa	

Applications

Tested Applications:
Cytometric bead array, Indirect ELISA, Sample test

Species Specificity:
human

Product Information

60980-2-PBS targets SLC7A6 as part of a matched antibody pair:

MP51413-1: 60980-1-PBS capture and 60980-2-PBS detection (validated in Cytometric bead array)

Unconjugated mouse monoclonal antibody pair in PBS only (BSA and azide free) storage buffer at a concentration of 1 mg/mL, ready for conjugation.

This conjugation ready format makes antibodies ideal for use in many applications including: ELISAs, multiplex assays requiring matched pairs, mass cytometry, and multiplex imaging applications. Antibody use should be optimized by the end user for each application and assay.

Storage

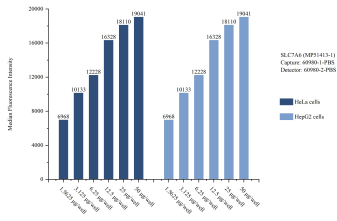
Storage:
Store at -80°C.

Storage Buffer:
PBS only, pH7.3

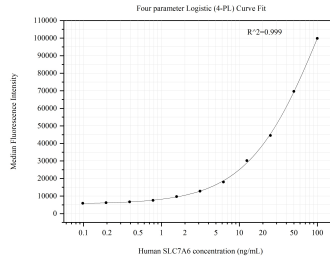
For technical support and original validation data for this product please contact:
T: 1 (888) 4PTGLAB (1-888-478-4522) (toll free in USA), or 1(312) 455-8498 (outside USA) E: proteintech@ptglab.com
W: ptglab.com

This product is exclusively available under Proteintech Group brand and is not available to purchase from any other manufacturer.

Selected Validation Data



Sample test of MP51413-1, SLC7A6 Monoclonal Matched Antibody Pair, PBS Only. Capture antibody: 60980-1-PBS. Detection antibody: 60980-2-PBS.



Cytometric bead array standard curve of MP51413-1, SLC7A6 Monoclonal Matched Antibody Pair, PBS Only. Capture antibody: 60980-1-PBS. Detection antibody: 60980-2-PBS. Standard: Ag4924. Range: 0.098-100 ng/mL