

For Research Use Only

STAU1 Monoclonal antibody

Catalog Number: 61024-1-Ig



Basic Information

Catalog Number: 61024-1-Ig	GenBank Accession Number: BC050432	Purification Method: Protein G purification
Size: 150ul , Concentration: 1000 ug/ml by Nanodrop;	GeneID (NCBI): 6780	CloneNo.: 1H1D7
Source: Mouse	UNIPROT ID: O95793	Recommended Dilutions: WB: 1:5000-1:50000
Isotype: IgG1	Full Name: staufen, RNA binding protein, homolog 1 (Drosophila)	
Immunogen Catalog Number: AG5573	Calculated MW: 63 kDa	
	Observed MW: 55-65 kDa	

Applications

Tested Applications:
WB, ELISA

Species Specificity:
human, mouse, rat, rabbit

Positive Controls:
WB : A549 cells, rabbit liver tissue, LNCaP cells, MCF-7 cells, HepG2 cells, K-562 cells, HSC-T6 cells, NIH/3T3 cells

Background Information

Staufen1 (STAU1)-mediated mRNA decay (SMD) degrades translationally active mRNAs that bind the double-stranded (ds)RNA binding protein STAU1 within their 3'-untranslated regions (3'UTRs) [PMID:21307942]. STAU1 can binds to stem structures and protect Dvl2 mRNA from degradation by associating with the secondary structure in the U1 region which is located at 5' position of second U stretch in the U2 region [PMID:17510634]. It has a role in specific positioning of mRNAs at given sites in the cell by cross-linking cytoskeletal and RNA components, and in stimulating their translation at the site.

Storage

Storage:
Store at -20°C. Stable for one year after shipment.

Storage Buffer:
PBS with 0.02% sodium azide and 50% glycerol, pH7.3

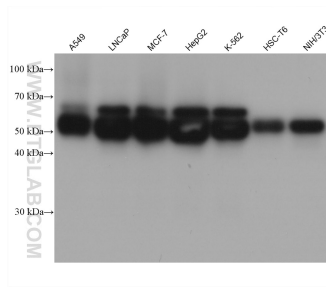
Aliquoting is unnecessary for -20°C storage

*** 20ul sizes contain 0.1% BSA

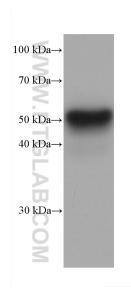
For technical support and original validation data for this product please contact:
T: 1 (888) 4PTGLAB (1-888-478-4522) (toll free in USA), or 1(312) 455-8498 (outside USA)
E: proteintech@ptglab.com
W: ptglab.com

This product is exclusively available under Proteintech Group brand and is not available to purchase from any other manufacturer.

Selected Validation Data



Various lysates were subjected to SDS PAGE followed by western blot with 61024-1-Ig (STAU1 antibody) at dilution of 1:10000 incubated at room temperature for 1.5 hours.



rabbit liver tissue were subjected to SDS PAGE followed by western blot with 61024-1-Ig (STAU1 antibody) at dilution of 1:10000 incubated at room temperature for 1.5 hours.