

For Research Use Only

# SDPR Monoclonal antibody

Catalog Number: 61031-3-Ig



## Basic Information

<b>Catalog Number:</b> 61031-3-Ig	<b>GenBank Accession Number:</b> BC016475	<b>Purification Method:</b> Protein G purification
<b>Size:</b> 150ul , Concentration: 1000 ug/ml by Nanodrop;	<b>GeneID (NCBI):</b> 8436	<b>CloneNo.:</b> 2C3H8
<b>Source:</b> Mouse	<b>UNIPROT ID:</b> O95810	<b>Recommended Dilutions:</b> WB: 1:5000-1:50000
<b>Isotype:</b> IgG1	<b>Full Name:</b> serum deprivation response (phosphatidylserine binding protein)	
<b>Immunogen Catalog Number:</b> AG34151	<b>Calculated MW:</b> 425 aa, 47 kDa	
	<b>Observed MW:</b> 68-70 kDa	

## Applications

**Tested Applications:**  
WB, ELISA

**Species Specificity:**  
human, mouse, rat, rabbit

**Positive Controls:**  
WB : Calu-1 cells, rabbit lung tissue, HUVEC cells, A172 cells, K-562 cells, pig lung tissue

## Background Information

Serum deprivation-response protein(SDRP), a substrate of protein kinase C, is a member of a group of proteins that bind to phosphatidylserine in a calcium-dependent manner. SDRP may participate in the generation or stabilization of membrane curvature. SDRP is highly expressed in heart and lung, and low in brain, kidney, liver, pancreas, placenta and skeletal muscle. SDRP of molecular masses 115 kDa and 100 kDa were found in neutrophils, monocytes, lymphocytes, platelets and erythrocytes. In platelets, however, the principal SDRP is a cytosolic protein of molecular mass 68 kDa. (PMID: 2390065)

## Storage

**Storage:**  
Store at -20°C. Stable for one year after shipment.

**Storage Buffer:**  
PBS with 0.02% sodium azide and 50% glycerol, pH7.3

Aliquoting is unnecessary for -20°C storage

\*\*\* 20ul sizes contain 0.1% BSA

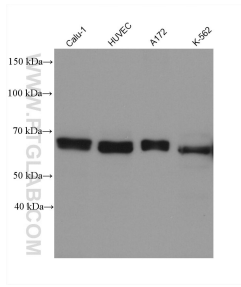
For technical support and original validation data for this product please contact:

T: 1 (888) 4PTGLAB (1-888-478-4522) (toll free in USA), or 1(312) 455-8498 (outside USA)

E: [proteintech@ptglab.com](mailto:proteintech@ptglab.com)  
W: [ptglab.com](http://ptglab.com)

This product is exclusively available under Proteintech Group brand and is not available to purchase from any other manufacturer.

## Selected Validation Data



Various lysates were subjected to SDS PAGE followed by western blot with 61031-3-Ig (SDPR antibody) at dilution of 1:20000 incubated at room temperature for 1.5 hours.