

For Research Use Only

# WNT2B Monoclonal antibody, PBS Only (Capture)

Catalog Number: 61070-1-PBS



## Basic Information

<b>Catalog Number:</b> 61070-1-PBS	<b>GenBank Accession Number:</b> BC141825	<b>Purification Method:</b> Protein G Magarose purification
<b>Size:</b> 100ug , Concentration: 1 mg/ml by Nanodrop;	<b>GeneID (NCBI):</b> 7482	<b>CloneNo.:</b> 1F11C9
<b>Source:</b> Mouse	<b>UNIPROT ID:</b> Q93097	
<b>Isotype:</b> IgG1	<b>Full Name:</b> wingless-type MMTV integration site family, member 2B	
<b>Immunogen Catalog Number:</b> AG28705	<b>Calculated MW:</b> 391 aa, 44 kDa	

## Applications

**Tested Applications:**  
Cytometric bead array, Indirect ELISA

**Species Specificity:**  
human

## Product Information

61070-1-PBS targets WNT2B as part of a matched antibody pair:

MP51661-1: 61070-1-PBS capture and 61070-2-PBS detection (validated in Cytometric bead array)

Unconjugated mouse monoclonal antibody pair in PBS only (BSA and azide free) storage buffer at a concentration of 1 mg/mL, ready for conjugation.

This conjugation ready format makes antibodies ideal for use in many applications including: ELISAs, multiplex assays requiring matched pairs, mass cytometry, and multiplex imaging applications. Antibody use should be optimized by the end user for each application and assay.

## Storage

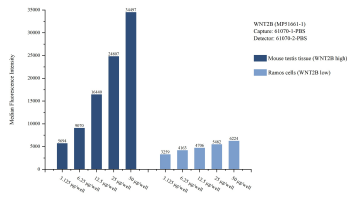
**Storage:**  
Store at -80°C.

**Storage Buffer:**  
PBS only, pH7.3

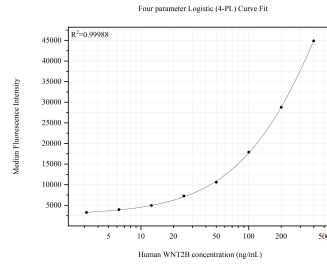
For technical support and original validation data for this product please contact:  
T: 1 (888) 4PTGLAB (1-888-478-4522) (toll free in USA), or 1(312) 455-8498 (outside USA)      E: proteintech@ptglab.com  
W: ptglab.com

**This product is exclusively available under Proteintech Group brand and is not available to purchase from any other manufacturer.**

## Selected Validation Data



Cytometric bead array sample test of MP51661-1, WNT2B Monoclonal Matched Antibody Pair, PBS Only. Capture antibody: 61070-1-PBS. Detection antibody: 61070-2-PBS.



Cytometric bead array standard curve of MP51661-1, WNT2B Monoclonal Matched Antibody Pair, PBS Only. Capture antibody: 61070-1-PBS. Detection antibody: 61070-2-PBS. Standard: Ag28705. Range: 3.125-400 ng/mL