

For Research Use Only

CTAK1 Monoclonal antibody, PBS Only (Capture)

Catalog Number: 61082-1-PBS



Basic Information

| | | |
|--|--|--|
| Catalog Number: 61082-1-PBS | GenBank Accession Number: BC024773 | Purification Method: Protein G Magarose purification |
| Size: 100ug , Concentration: 1 mg/ml by Nanodrop; | GeneID (NCBI): 4140 | CloneNo.: 1D9H11 |
| Source: Mouse | UNIPROT ID: P27448 | |
| Isotype: IgG1 | Full Name: MAP/microtubule affinity-regulating kinase 3 | |
| Immunogen Catalog Number: AG8303 | Calculated MW: 78 kDa, 80 kDa | |

Applications

Tested Applications:
Cytometric bead array, Indirect ELISA

Species Specificity:
human

Product Information

61082-1-PBS targets CTAK1 as part of a matched antibody pair:

MP51716-1: 61082-1-PBS capture and 61082-2-PBS detection (validated in Cytometric bead array)

MP51716-2: 61082-1-PBS capture and 61082-3-PBS detection (validated in Cytometric bead array)

Unconjugated mouse monoclonal antibody pair in PBS only (BSA and azide free) storage buffer at a concentration of 1 mg/mL, ready for conjugation.

This conjugation ready format makes antibodies ideal for use in many applications including: ELISAs, multiplex assays requiring matched pairs, mass cytometry, and multiplex imaging applications. Antibody use should be optimized by the end user for each application and assay.

Storage

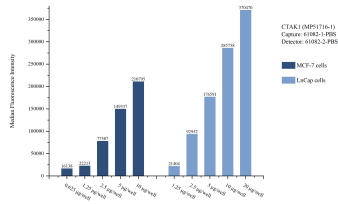
Storage:
Store at -80°C.

Storage Buffer:
PBS only, pH7.3

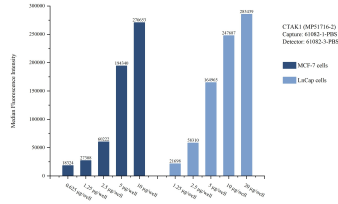
For technical support and original validation data for this product please contact:
T: 1 (888) 4PTGLAB (1-888-478-4522) (toll free in USA), or 1(312) 455-8498 (outside USA) E: proteintech@ptglab.com
W: ptglab.com

This product is exclusively available under Proteintech Group brand and is not available to purchase from any other manufacturer.

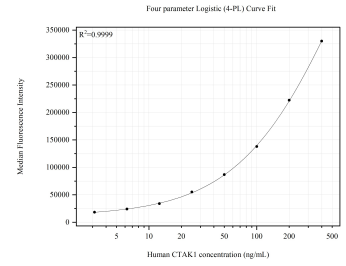
Selected Validation Data



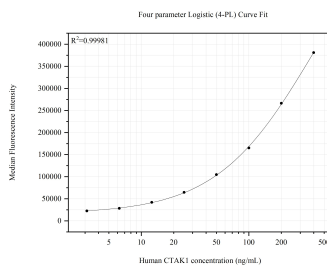
Cytometric bead array sample test of MP51716-1, CTAK1 Monoclonal Matched Antibody Pair, PBS Only. Capture antibody: 61082-1-PBS. Detection antibody: 61082-2-PBS.



Cytometric bead array sample test of MP51716-2, CTAK1 Monoclonal Matched Antibody Pair, PBS Only. Capture antibody: 61082-1-PBS. Detection antibody: 61082-3-PBS.



Cytometric bead array standard curve of MP51716-1, CTAK1 Monoclonal Matched Antibody Pair, PBS Only. Capture antibody: 61082-1-PBS. Detection antibody: 61082-2-PBS. Standard: Ag8303. Range: 3.125-400 ng/mL.



Cytometric bead array standard curve of MP51716-2, CTAK1 Monoclonal Matched Antibody Pair, PBS Only. Capture antibody: 61082-1-PBS. Detection antibody: 61082-3-PBS. Standard: Ag8303. Range: 3.125-400 ng/mL.