

For Research Use Only

EML4 Monoclonal antibody, PBS Only (Detector)

Catalog Number: 61094-2-PBS



Basic Information

Catalog Number:

61094-2-PBS

Size:

100ug, Concentration: 1 mg/ml by
Nanodrop;

Source:

Mouse

Isotype:

IgM

Immunogen Catalog Number:

AG18755

GenBank Accession Number:

BC140845

GeneID (NCBI):

27436

UNIPROT ID:

Q9HC35

Full Name:

echinoderm microtubule associated
protein like 4

Calculated MW:

981 aa, 109 kDa

Purification Method:

Thiophilic affinity chromatograph

CloneNo.:

2D6H1

Applications

Tested Applications:

Cytometric bead array, Indirect ELISA

Species Specificity:

human

Product Information

61094-2-PBS targets EML4 as part of a matched antibody pair:

MP51727-1: 61094-1-PBS capture and 61094-2-PBS detection (validated in Cytometric bead array)

Unconjugated mouse monoclonal antibody pair in PBS only (BSA and azide free) storage buffer at a concentration of 1 mg/mL, ready for conjugation.

This conjugation ready format makes antibodies ideal for use in many applications including: ELISAs, multiplex assays requiring matched pairs, mass cytometry, and multiplex imaging applications. Antibody use should be optimized by the end user for each application and assay.

Storage

Storage:

Store at -80°C.

Storage Buffer:

PBS only, pH7.3

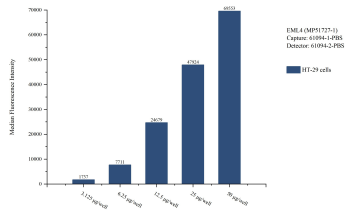
For technical support and original validation data for this product please contact:

T: 1 (888) 4PTGLAB (1-888-478-4522) (toll free
in USA), or 1(312) 455-8498 (outside USA)

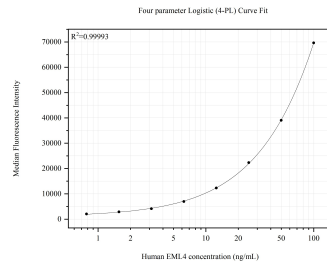
E: proteintech@ptglab.com
W: ptglab.com

This product is exclusively available under Proteintech Group brand and is not available to purchase from any other manufacturer.

Selected Validation Data



Cytometric bead array sample test of MP51727-1, EML4 Monoclonal Matched Antibody Pair, PBS Only. Capture antibody: 61094-1-PBS. Detection antibody: 61094-2-PBS.



Cytometric bead array standard curve of MP51727-1, EML4 Monoclonal Matched Antibody Pair, PBS Only. Capture antibody: 61094-1-PBS. Detection antibody: 61094-2-PBS. Standard: Ag18755. Range: 0.781-100 ng/mL.