

For Research Use Only

Anti-Mouse CD16/32 (93)

Catalog Number: 65057-1-Ig



Basic Information

Catalog Number: 65057-1-Ig	GenBank Accession Number: BC038070	Purification Method: Affinity purification
Size: 500ug, 0.5 mg/ml	GeneID (NCBI): 14130	CloneNo.: 93
Source: Rat	Full Name: Fc receptor, IgG, low affinity IIb	
Isotype: IgG2a		

Applications

Tested Applications:
FC

Species Specificity:
Mouse

Background Information

CD16 (F_cγRIII) is a 50-70 kDa low affinity Fc receptor found on the surface of natural killer cells, neutrophil polymorphonuclear leukocytes, monocytes and macrophages. CD16 mediates antibody-dependent cellular cytotoxicity (ADCC) and other antibody-dependent responses, such as phagocytosis. CD32 (F_cγRII) is a 40 kD transmembrane glycoprotein that binds to the Fc region of IgG with low affinity. CD32 is present on phagocytic cells such as macrophages and neutrophils, and is involved in the process of phagocytosis and clearing of immune complexes. Rat anti mouse CD16/32 antibody, clone 93 is specific to the common epitope of CD16 and CD32. It can be used for blocking non-specific binding of immunoglobulins to the Fc receptors.

Storage

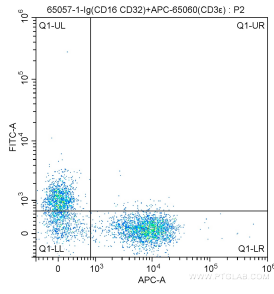
Storage:
Store at 2-8°C.

Storage Buffer:
Borate buffered saline, pH 8.2.

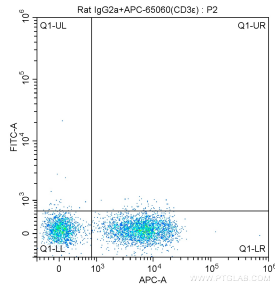
For technical support and original validation data for this product please contact:
T: 1 (888) 4PTGLAB (1-888-478-4522) (toll free in USA), or 1(312) 455-8498 (outside USA) E: proteintech@ptglab.com
W: ptglab.com

This product is exclusively available under Proteintech Group brand and is not available to purchase from any other manufacturer.

Selected Validation Data



1X10⁶ mouse splenocytes were surface stained with APC Anti-Mouse CD3ε (APC-65060, Clone: 145-2C11), and 1 ug Anti-Mouse CD16/32 (65057-1-Ig, Clone: 93) and FITC anti-rat IgG2a Antibody at dilution 1:200. Cells were not fixed.



1X10⁶ mouse splenocytes were surface stained with APC Anti-Mouse CD3ε (APC-65060, Clone: 145-2C11), and 1 ug Rat IgG2a Isotype Control and FITC anti-rat IgG2a Antibody at dilution 1:200. Cells were not fixed.