

For Research Use Only

Anti-Mouse CD45.2 (104)

Catalog Number: 65072-1-Ig



Basic Information

Catalog Number:

65072-1-Ig

Size:

500ug, 0.5 mg/ml

Source:

Mouse

Isotype:

IgG2a, kappa

GenBank Accession Number:

BC028512

GeneID (NCBI):

19264

UNIPROT ID:

P06800

Full Name:

protein tyrosine phosphatase,
receptor type, C

Purification Method:

Affinity purification

CloneNo.:

104

Applications

Tested Applications:

FC

Species Specificity:

Mouse

Background Information

CD45, also known as protein tyrosine phosphatase, receptor type C, is a type I transmembrane protein expressed on the surface of all haematopoietic cells with the exception of erythrocytes and platelets (PMID: 3489673; 28615666). CD45 is a pan-haematopoietic cell marker and has been shown to be essential for T- and B-cell activation and signalling (PMID: 9429890; 16378097). Allelic variants of mouse CD45, CD45.1 (Ly5.1) and CD45.2 (Ly5.1), have been established as a marker system to track haematopoietic cells following congenic mouse bone marrow transplants (PMID: 28615666). CD45.2 is the common form and is expressed by most of the established strains, while CD45.1 is found in only a few like the SJL mouse strain (PMID: 3489673).

Storage

Storage:

Store at 2-8°C. Stable for one year after shipment.

Storage Buffer:

PBS with 0.09% sodium azide.

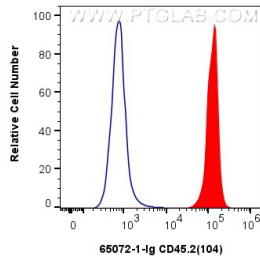
For technical support and original validation data for this product please contact:

T: 1 (888) 4PTGLAB (1-888-478-4522) (toll free
in USA), or 1(312) 455-8498 (outside USA)

E: proteintech@ptglab.com
W: ptglab.com

This product is exclusively available under Proteintech Group brand and is not available to purchase from any other manufacturer.

Selected Validation Data



1x10⁶ mouse splenocytes were surface stained with 0.5 μ g Anti-Mouse CD45.2 (65072-1-Ig, Clone: 104) and FITC anti-Mouse IgG2a Antibody at dilution 1:100 (red), or 0.5 μ g Mouse IgG2a Isotype Control (C1.18.4) (65208-1-Ig, Clone: C1.18.4) and FITC anti-Mouse IgG2a Antibody at dilution 1:100 (blue). Cells were not fixed.