

For Research Use Only

# Anti-Mouse Ly-6G (1A8)

Catalog Number: 65078-1-Ig **1 Publications**



## Basic Information

<b>Catalog Number:</b> 65078-1-Ig	<b>GenBank Accession Number:</b> X70920	<b>Purification Method:</b> Affinity purification
<b>Size:</b> 100ug , 500 µg/ml	<b>GeneID (NCBI):</b> 546644	<b>CloneNo.:</b> 1A8
<b>Source:</b> Rat	<b>Full Name:</b> lymphocyte antigen 6 complex, locus G	
<b>Isotype:</b> IgG2a, kappa		

## Applications

**Tested Applications:**  
FC

**Cited Applications:**  
IF

**Species Specificity:**  
Mouse

**Cited Species:**  
mouse

## Background Information

Ly-6G (lymphocyte antigen 6 complex, locus G), also known as Gr-1, is a 21-25 kDa, glycosylphosphatidylinositol-anchored protein expressed on myeloid lineage cells in mouse bone marrow (PMID: 8360469). The expression of Ly-6G increases on neutrophils as they differentiate from immature cells in the bone marrow to mature cells in the blood and spleen (PMID: 8890901). Antibodies targeting Ly6G (RB6-8C5 or 1A8) are commonly used in studies aimed at identifying the role of neutrophils (PMID: 23543767). The 1A8 mAb is specific for Ly-6G (PMID: 8360469).

## Notable Publications

Author	Pubmed ID	Journal	Application
Min Wu	38110141	Eur J Pharmacol	IF

## Storage

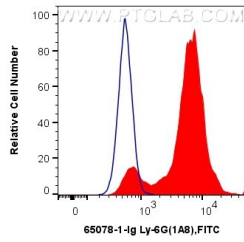
**Storage:**  
Store at 2-8°C. Stable for one year after shipment.

**Storage Buffer:**  
PBS with 0.09% sodium azide.

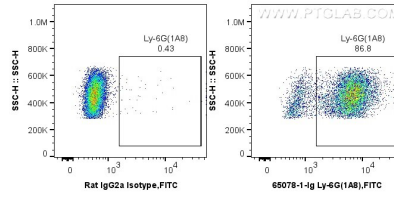
For technical support and original validation data for this product please contact:  
T: 1 (888) 4PTGLAB (1-888-478-4522) (toll free in USA), or 1(312) 455-8498 (outside USA)      E: proteintech@ptglab.com  
W: ptglab.com

**This product is exclusively available under Proteintech Group brand and is not available to purchase from any other manufacturer.**

## Selected Validation Data



1X10<sup>6</sup> mouse bone marrow cells were surface stained with 0.5 ug Anti-Mouse Ly-6G (65078-1-Ig, Clone:1A8) and FITC anti-Rat IgG2a Antibody at dilution 1:100 (red), or 0.5 ug Control Antibody. Cells were not fixed.



1X10<sup>6</sup> mouse bone marrow cells were surface stained with 0.5 ug Anti-Mouse Ly-6G (65078-1-Ig, Clone:1A8) and FITC anti-Rat IgG2a Antibody at dilution 1:100, or 0.5 ug Control Antibody. Cells were not fixed.