

For Research Use Only

Anti-Mouse CD16 / CD32 (2.4G2)

Catalog Number: 65080-1-Ig **1 Publications**



Basic Information

| | | |
|--------------------------------------|---|--|
| Catalog Number: 65080-1-Ig | GenBank Accession Number: BC038070 | Purification Method: Affinity purification |
| Size: 500ug, 0.5 mg/ml | GeneID (NCBI): 14130 | CloneNo.: 2.4G2 |
| Source: Rat | UNIPROT ID: P08101 | |
| Isotype: IgG2b | Full Name: Fc receptor, IgG, low affinity IIb | |

Applications

Tested Applications:
FC

Cited Applications:
FC

Species Specificity:
Mouse

Cited Species:
mouse

Background Information

CD16 (FcγRIII) is a 50-70 kDa low affinity Fc receptor found on the surface of natural killer cells, neutrophil polymorphonuclear leukocytes, monocytes and macrophages. CD16 mediates antibody-dependent cellular cytotoxicity (ADCC) and other antibody-dependent responses, such as phagocytosis. CD32 (FcγRII) is a 40 kD transmembrane glycoprotein that binds to the Fc region of IgG with low affinity. CD32 is present on phagocytic cells such as macrophages and neutrophils, and is involved in the process of phagocytosis and clearing of immune complexes. The 2.4G2 antibody reacts with the extracellular domains of mouse CD16 (FcRIII) and CD32 (FcRII) (PMID: 90108; 8406898). Rat anti mouse CD16/CD32 antibody, clone 2.4G2 is specific to the common epitope of CD16 and CD32. It can be used for blocking non-specific binding of immunoglobulins to the Fc receptors.

Notable Publications

| Author | Pubmed ID | Journal | Application |
|-----------|-----------|-----------------|-------------|
| Zefan Liu | 37229252 | Front Pharmacol | FC |

Storage

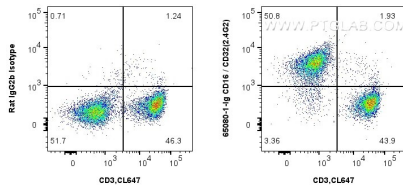
Storage:
Store at 2-8°C. Stable for one year after shipment.

Storage Buffer:
PBS with 0.09% sodium azide.

For technical support and original validation data for this product please contact:
T: 1 (888) 4PTGLAB (1-888-478-4522) (toll free in USA), or 1(312) 455-8498 (outside USA) E: proteintech@ptglab.com
W: ptglab.com

This product is exclusively available under Proteintech Group brand and is not available to purchase from any other manufacturer.

Selected Validation Data



1x10⁶ mouse splenocytes were stained with 0.5 ug Anti-Mouse CD16 / CD32 (65080-1-Ig, Clone: 2.4G2) and FITC anti-rat IgG2b Antibody at dilution 1:100, or 0.5 ug Control Antibody and FITC anti-rat IgG2b Antibody at dilution 1:100. Cells were co-stained with CoraLite® Plus 647 Anti-Mouse CD3. Cells were not fixed.