

For Research Use Only

Anti-Human PD-L1/CD274 (29E.2A3)

Catalog Number: 65081-1-Ig **3 Publications**



Basic Information

Catalog Number:

65081-1-Ig

Size:

100ug , 0.5 mg/ml

Source:

Mouse

Isotype:

IgG2b, kappa

GenBank Accession Number:

BC069381

GeneID (NCBI):

29126

UNIPROT ID:

Q9NZQ7

Full Name:

CD274 molecule

Purification Method:

Affinity purification

CloneNo.:

29E.2A3

Applications

Tested Applications:

FC

Species Specificity:

human

Cited Species:

human

Background Information

Programmed cell death ligand 1 (PD-L1, CD274, or B7-H1), is the first member of B7 family to be discovered. B7 family molecules are type I transmembrane proteins belonging to the immunoglobulin superfamily. In concert with their CD28 family receptors, the B7s are key regulators of the adaptive immune response. PD-L1 is suggested as a negative regulator of T and B cell, and plays important role in mediating tolerance of lymphocytes to self-antigens. It is also involved in the costimulatory signal, essential for T-cell proliferation and production of IL10 and IFNG, in an IL2-dependent and a PD-1-independent manner.

Notable Publications

Author	Pubmed ID	Journal	Application
Qian Qian Yang	39481625	Acta Biomater	
Hamza Hanieh	39400777	Inflammation	
Yuting Zhang	38723861	Transl Res	

Storage

Storage:

Store at 2-8°C. Stable for one year after shipment.

Storage Buffer:

PBS with 0.09% sodium azide.

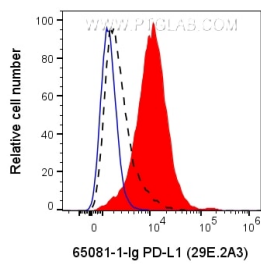
For technical support and original validation data for this product please contact:

T: 1 (888) 4PTGLAB (1-888-478-4522) (toll free in USA), or 1(312) 455-8498 (outside USA)

E: proteintech@ptglab.com
W: ptglab.com

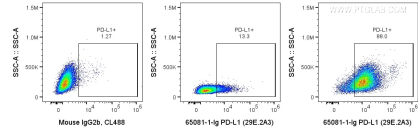
This product is exclusively available under Proteintech Group brand and is not available to purchase from any other manufacturer.

Selected Validation Data



1X10⁶ PHA treated (3d) human PBMCs were surface stained with 0.2 ug Anti-Human PD-L1 (B7-H1) (65081-1-Ig, Clone:29E.2A3) and CoraLite®488-Conjugated AffiniPure Goat Anti-Mouse IgG(H+L) at dilution 1:1000 (red), or Mouse IgG2b Isotype Control (blue).

1X10⁶ untreated human PBMCs were surface stained with 0.2 ug Anti-Human PD-L1 (B7-H1) (65081-1-Ig, Clone:29E.2A3) and CoraLite®488-Conjugated AffiniPure Goat Anti-Mouse IgG(H+L) at dilution 1:1000



1X10⁶ PHA treated (3d) human PBMCs were surface stained with 0.2 ug Anti-Human PD-L1 (B7-H1) (65081-1-Ig, Clone:29E.2A3) and CoraLite®488-Conjugated AffiniPure Goat Anti-Mouse IgG(H+L) at dilution 1:1000 (right), or Mouse IgG2b Isotype Control (left).

1X10⁶ untreated human PBMCs were surface stained with 0.2 ug Anti-Human PD-L1 (B7-H1) (65081-1-Ig, Clone:29E.2A3) and CoraLite®488-Conjugated AffiniPure Goat Anti-Mouse IgG(H+L) at dilution 1:1000