

For Research Use Only

# Anti-Human CD80 (2D10.4)

Catalog Number: 65083-1-Ig **1 Publications**



## Basic Information

Catalog Number:	GenBank Accession Number:	Purification Method:
65083-1-Ig	BC042665	Affinity purification
Size:	GeneID (NCBI):	CloneNo.:
100ug , 500 µg/ml	941	2D10.4
Source:	Full Name:	
Mouse	CD80 molecule	
Isotype:	Calculated MW:	
IgG1, kappa	33 kDa	

## Applications

Tested Applications:	Positive Controls:
FC	FC : Daudi cells,
Cited Applications:	
FC	
Species Specificity:	
human	
Cited Species:	
human	

## Background Information

CD80 (also known as B7-1) is a type I membrane protein that is a member of the immunoglobulin superfamily, with an extracellular immunoglobulin constant-like domain and a variable-like domain required for receptor binding. It is expressed on antigen-presenting cells (APCs), including B cells, dendritic cells, monocytes, and macrophages. CD80 is the receptor for the proteins CD28 and CTLA-4 found on the surface of T-cells. It is involved in the costimulatory signal essential for T-lymphocyte activation. T-cell proliferation and cytokine production is induced by the binding of CD28, binding to CTLA-4 has opposite effects and inhibits T-cell activation. CD80 also acts as a cellular attachment receptor for adenovirus subgroup B. (PMID: 7545666; 12015893; 16920215)

## Notable Publications

Author	Pubmed ID	Journal	Application
Hideki Hayashi	39106307	Proc Natl Acad Sci U S A	FC

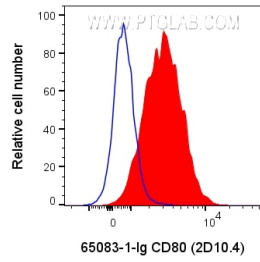
## Storage

**Storage:**  
Store at 2-8°C. Stable for one year after shipment.  
**Storage Buffer:**  
PBS with 0.09% sodium azide, pH7.3

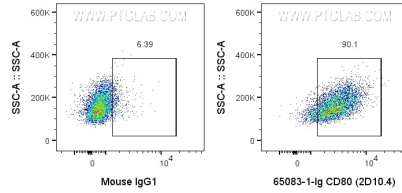
For technical support and original validation data for this product please contact:  
T: 1 (888) 4PTGLAB (1-888-478-4522) (toll free in USA), or 1(312) 455-8498 (outside USA)  
E: [proteintech@ptglab.com](mailto:proteintech@ptglab.com)  
W: [ptglab.com](http://ptglab.com)

This product is exclusively available under Proteintech Group brand and is not available to purchase from any other manufacturer.

## Selected Validation Data



1x10<sup>6</sup> Daudi cells were surface stained with 0.2 ug Anti-Human CD80 (65083-1-Ig, Clone: 2D10.4) or Mouse IgG1 Isotype Control (65124-1-Ig, Clone: MOPC-21) and CoraLite®647-conjugated F(ab')<sub>2</sub> Fragment Goat Anti-Mouse IgG (H+L) (SA00014-8). Cells were not fixed.



1x10<sup>6</sup> Daudi cells were surface stained with 0.2 ug Anti-Human CD80 (65083-1-Ig, Clone: 2D10.4) or Mouse IgG1 Isotype Control (65124-1-Ig, Clone: MOPC-21) and CoraLite®647-conjugated F(ab')<sub>2</sub> Fragment Goat Anti-Mouse IgG (H+L) (SA00014-8). Cells were not fixed.