

For Research Use Only

Anti-Mouse CD90.2 (30-H12)

Catalog Number: 65088-1-Ig **1 Publications**



Basic Information

Catalog Number:	GenBank Accession Number:	Purification Method:
65088-1-Ig	BC054436	Affinity purification
Size:	GeneID (NCBI):	CloneNo.:
500ug , 500 µg/ml	21838	30-H12
Source:	Full Name:	
Rat	thymus cell antigen 1, theta	
Isotype:		
IgG2b, kappa		

Applications

Tested Applications:
FC
Cited Applications:
FC
Species Specificity:
mouse

Background Information

CD90 (Thy-1) is a 25 kDa, GPI-linked membrane glycoprotein that belongs to immunoglobulin superfamily (PMID: 6177036; 6153212). Originally described as a brain thymus cross-reactive antigen, it is found in large quantities on mouse and rat thymocytes and central nervous system cells (PMID: 83175). CD90 has been postulated to be involved in cellular recognition, adherence, and T cell activation (PMID: 7683034). Mouse CD90 (Thy-1) is defined as a differentiation alloantigen, represented as two serologically distinguishable allelic forms, designated CD90.1 (Thy-1.1) and CD90.2 (Thy-1.2) (PMID: 83175). CD90.2 is expressed by thymocytes, T cells, neurons and hematopoietic stem cells in most strains of mice (C3H, BALB/c, C57BL/6, DBA, and others), whereas CD90.1 is expressed in some mouse strains like AKR (PMID: 5919593).

Notable Publications

Author	Pubmed ID	Journal	Application
Bin Hu	36793308	Regen Ther	FC

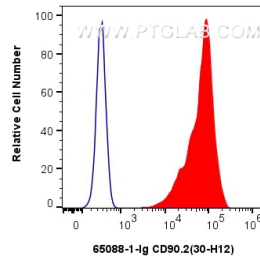
Storage

Storage:
Store at 2-8°C. Stable for one year after shipment.
Storage Buffer:
PBS with 0.09% sodium azide.

For technical support and original validation data for this product please contact:
T: 1 (888) 4PTGLAB (1-888-478-4522) (toll free in USA), or 1(312) 455-8498 (outside USA)
E: proteintech@ptglab.com
W: ptglab.com

This product is exclusively available under Proteintech Group brand and is not available to purchase from any other manufacturer.

Selected Validation Data



1X10⁶ C57BL/6 mouse thymocytes were surface stained with 1 ug Anti-Mouse CD90.2 (65088-1-Ig, Clone: 30-H12) (red) or 1 ug Rat IgG2b Isotype Control (LTF-2) (65211-1-Ig, Clone: LTF-2) (blue), and FITC anti-Rat IgG2b Antibody at dilution 1:100. Cells were not fixed.