

For Research Use Only

Anti-Human CD16 (3G8), PBS Only (Capture)

Catalog Number: 65090-1-PBS



Basic Information

Catalog Number: 65090-1-PBS	GenBank Accession Number: BC017865	Purification Method: Protein G purification
Size: 100ug, 2mg/ml	GeneID (NCBI): 2214	CloneNo.: 3G8
Source: Mouse	ENSEMBL Gene ID: ENSG00000203747	
Isotype: IgG1, kappa	Full Name: Fc fragment of IgG, low affinity IIIa, receptor (CD16a)	
	Calculated MW: 254 aa, 29 kDa	

Applications

Tested Applications:
FC, Cytometric bead array, Indirect ELISA, Sample test

Species Specificity:
human

Product Information

65090-1-PBS targets CD16 as part of a matched antibody pair:

MP50298-3: 65090-1-PBS capture and 68897-2-PBS detection (validated in Cytometric bead array)

MP50298-4: 65090-1-PBS capture and 68897-3-PBS detection (validated in Cytometric bead array)

Unconjugated mouse monoclonal antibody pair in PBS only (BSA and azide free) storage buffer at a concentration of 1 mg/mL, ready for conjugation.

This conjugation ready format makes antibodies ideal for use in many applications including: ELISAs, multiplex assays requiring matched pairs, mass cytometry, and multiplex imaging applications. Antibody use should be optimized by the end user for each application and assay.

Background Information

CD16 is a 50-70-kDa low affinity Fc receptor found on the surface of natural killer cells, neutrophil polymorphonuclear leukocytes, monocytes and macrophages. CD16 mediates antibody-dependent cellular cytotoxicity (ADCC) and other antibody-dependent responses, such as phagocytosis. CD16 has been identified as Fc receptors FcγRIIIa (CD16a) and FcγRIIIb (CD16b), encoded by two nearly identical genes, FCGR3A and the FCGR3B. Clone 3G8 recognizes both the CD16a and CD16b (PMID: 7592758).

Storage

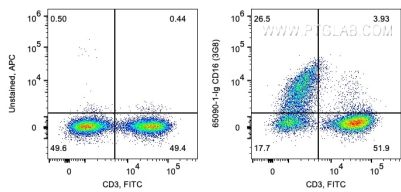
Storage:
Store at -80°C.

Storage Buffer:
PBS Only

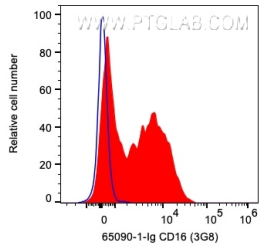
For technical support and original validation data for this product please contact:
T: 1 (888) 4PTGLAB (1-888-478-4522) (toll free in USA), or 1(312) 455-8498 (outside USA)
E: proteintech@ptglab.com
W: ptglab.com

This product is exclusively available under Proteintech Group brand and is not available to purchase from any other manufacturer.

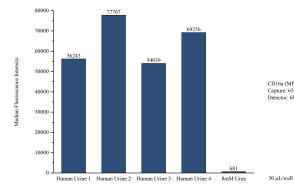
Selected Validation Data



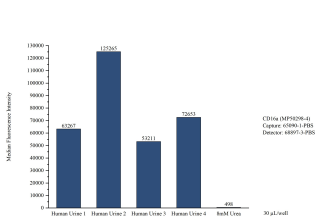
1X10⁶ human PBMCs were surface co-stained with FITC Anti-Human CD3 and 0.2 ug Anti-Human CD16 (65090-1-Ig, Clone:3G8) and APC-Goat anti-Mouse IgG at dilution 1:1000. Cells were not fixed. Lymphocytes were gated. This data was developed using the same antibody clone with 65090-1-PBS in a different storage buffer formulation.



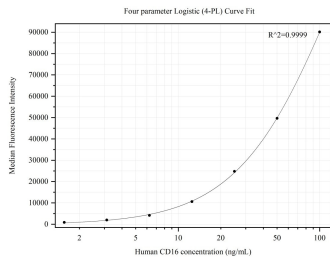
1X10⁶ human PBMCs were surface stained with 0.2 ug Anti-Human CD16 (65090-1-Ig, Clone:3G8) and APC-Goat anti-Mouse IgG at dilution 1:1000. Cells were not fixed. Lymphocytes were gated. This data was developed using the same antibody clone with 65090-1-PBS in a different storage buffer formulation.



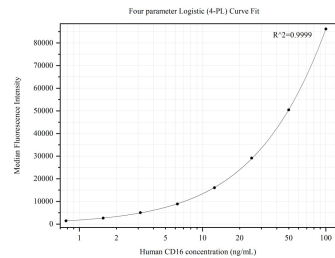
Cytometric bead array of Human urine using MP50298-3, CD16a Monoclonal Matched Antibody Pair, PBS Only. Capture antibody: 65090-1-PBS. Detection antibody: 68897-2-PBS. Urine of four individual healthy human donors was analyzed using MP50298-3.



Cytometric bead array of Human urine using MP50298-4, CD16a Monoclonal Matched Antibody Pair, PBS Only. Capture antibody: 65090-1-PBS. Detection antibody: 68897-3-PBS. Urine of four individual healthy human donors was analyzed using MP50298-4.



Cytometric bead array standard curve of MP50298-3, CD16 Monoclonal Matched Antibody Pair, PBS Only. Capture antibody: 65090-1-PBS. Detection antibody: 68897-2-PBS. Standard:Eg31662. Range: 1.563-100 ng/mL.



Cytometric bead array standard curve of MP50298-4, CD16 Monoclonal Matched Antibody Pair, PBS Only. Capture antibody: 65090-1-PBS. Detection antibody: 68897-3-PBS. Standard:Eg31662. Range: 0.781-100 ng/mL.