

For Research Use Only

# Anti-Human CD161 (HP-3G10)

Catalog Number: 65115-1-Ig



## Basic Information

Catalog Number:

65115-1-Ig

Size:

100ug, 0.5 mg/ml

Source:

Mouse

Isotype:

IgG1, kappa

GenBank Accession Number:

BC114516

GeneID (NCBI):

3820

ENSEMBL Gene ID:

ENSG00000111796

UNIPROT ID:

Q12918

Full Name:

killer cell lectin-like receptor  
subfamily B, member 1

Calculated MW:

225 aa, 25 kDa

Purification Method:

Affinity purification

CloneNo.:

HP-3G10

## Applications

Tested Applications:

FC

Species Specificity:

Human

## Storage

Storage:

Store at 2-8°C. Stable for one year after shipment.

Storage Buffer:

Phosphate based buffer with 0.09% sodium azide, pH 7.2.

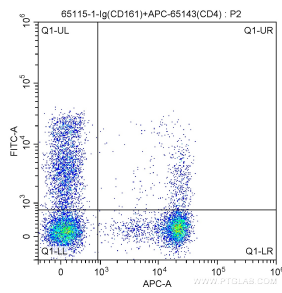
For technical support and original validation data for this product please contact:

T: 1 (888) 4PTGLAB (1-888-478-4522) (toll free  
in USA), or 1(312) 455-8498 (outside USA)

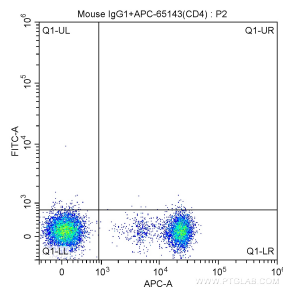
E: [proteintech@ptglab.com](mailto:proteintech@ptglab.com)  
W: [ptglab.com](http://ptglab.com)

This product is exclusively available under Proteintech Group brand and is not available to purchase from any other manufacturer.

## Selected Validation Data



1X10<sup>6</sup> human peripheral blood lymphocytes were surface stained with APC Anti-Human CD4 (APC-65143, Clone: RPA-T4), and 1 ug Anti-Human CD161 (65115-1-Ig, Clone: HP-3G10) and FITC anti-mouse IgG1 antibody at dilution 1:200. Cells were not fixed.



1X10<sup>6</sup> human peripheral blood lymphocytes were surface stained with APC Anti-Human CD4 (APC-65143, Clone: RPA-T4), and 1 ug mouse IgG1 isotype control and FITC anti-mouse IgG1 antibody at dilution 1:200. Cells were not fixed.